

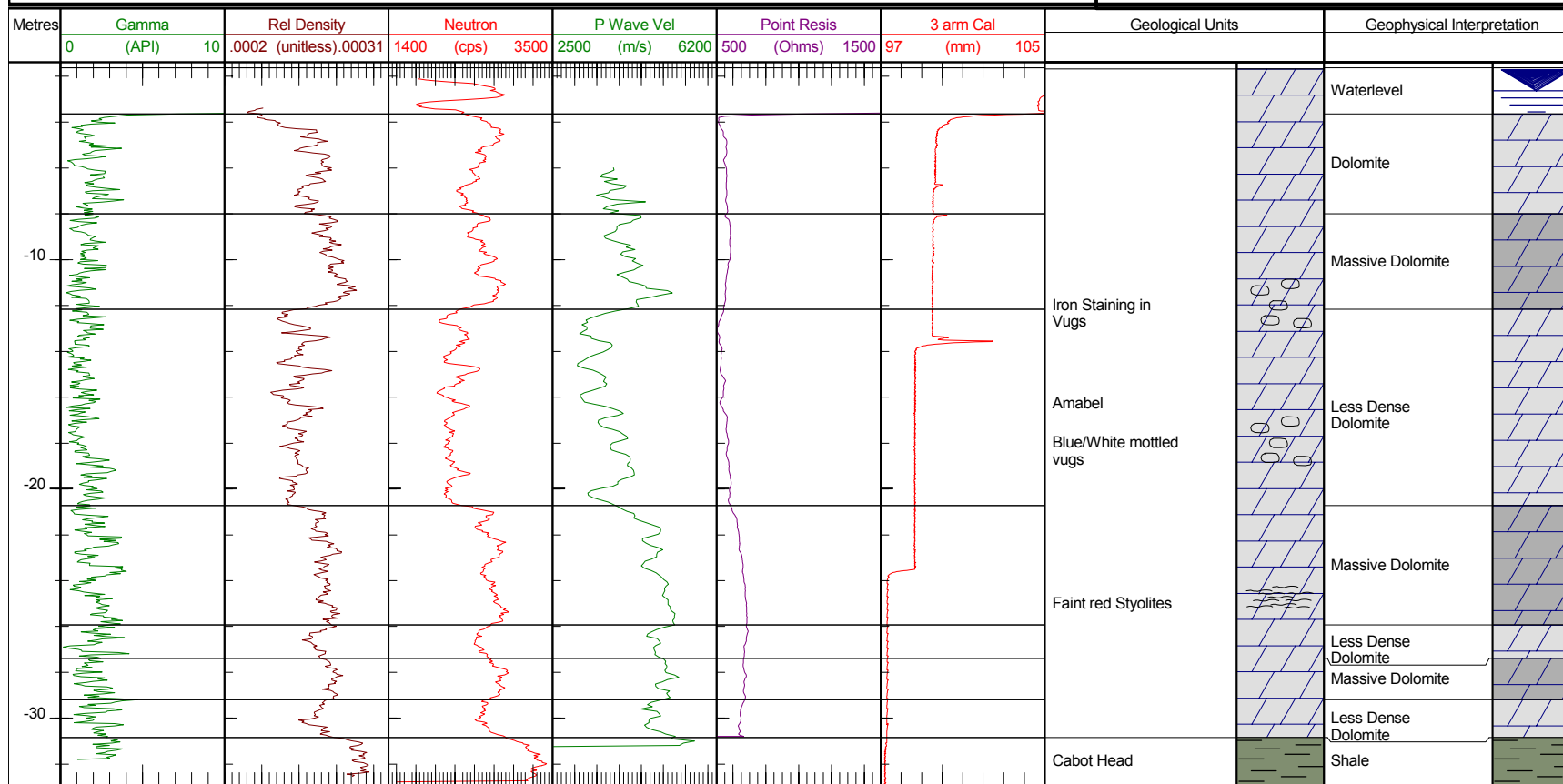
Borehole Physical Properties

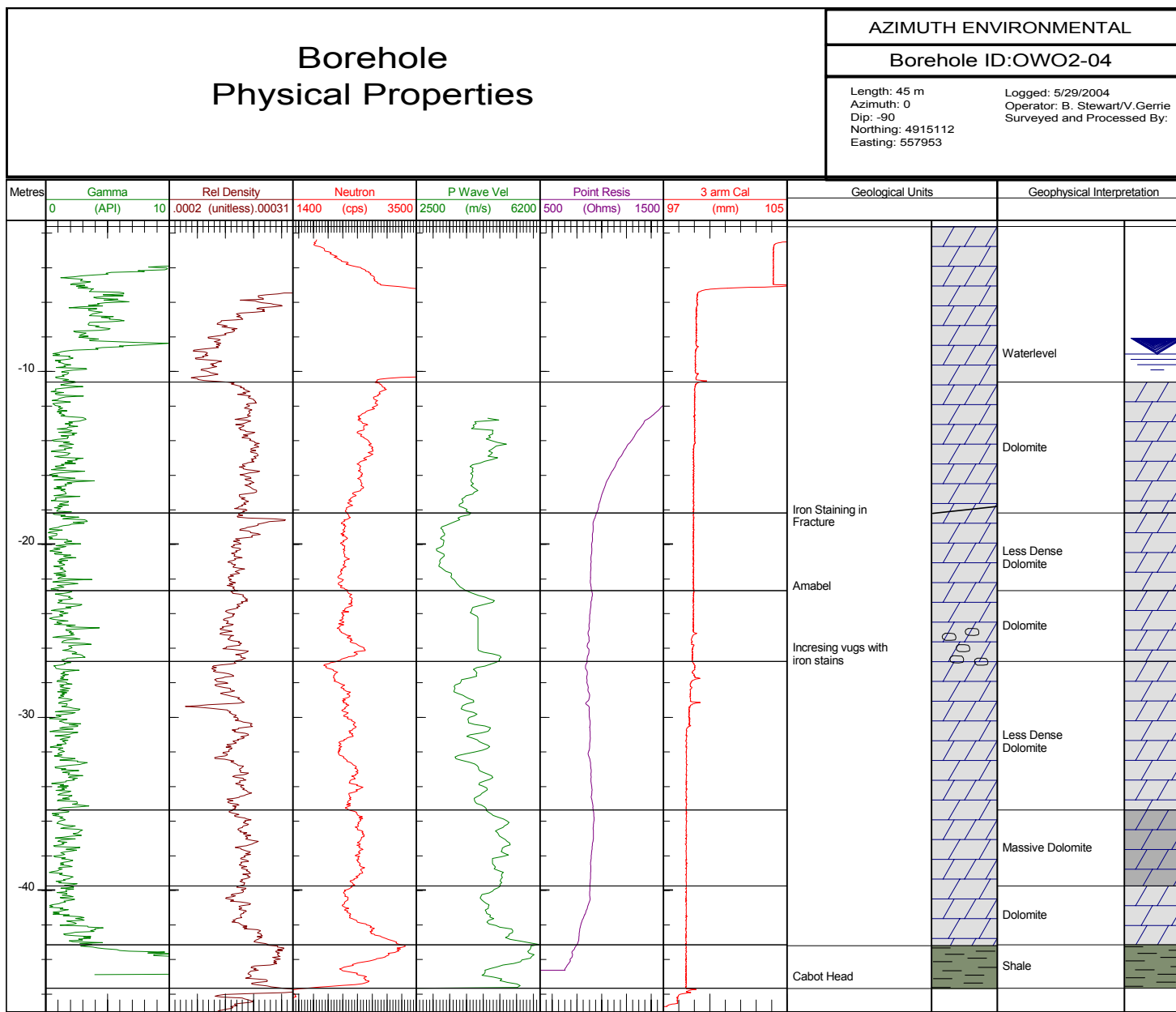
AZIMUTH ENVIRONMENTAL

Borehole ID:OWO1-04

Length: 30 m
Azimuth: 0
Dip: -90
Northing: 4914613
Easting: 558137

Logged: 5/29/2004
Operator: B. Stewart/V. Gerrie
Surveyed and Processed By:





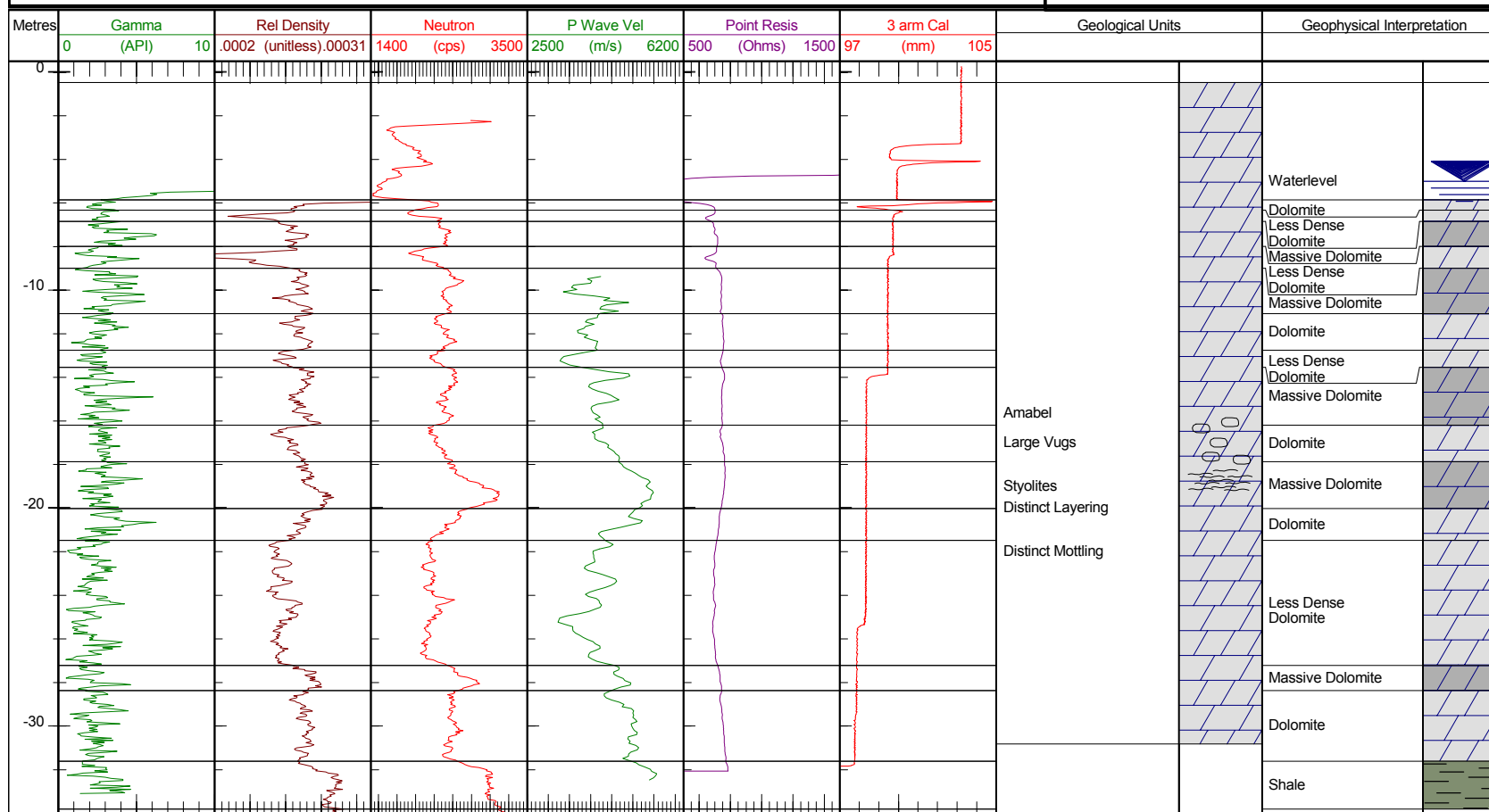
Borehole Physical Properties

AZIMUTH ENVIRONMENTAL

Borehole ID:OWO4-04

Length: 30 m
Azimuth: 0
Dip: -90
Northing: 4915114
Easting: 558969

Logged: 5/29/2004
Operator: B. Stewart/V.Gerrie
Surveyed and Processed By:



Borehole Physical Properties

AZIMUTH ENVIRONMENTAL

Borehole ID:OWO5-04

Length: 30 m
Azimuth: 0
Dip: -90
Northing: 4915344
Easting: 558680

Logged: 5/29/2004
Operator: B. Stewart/V.Gerrie
Surveyed and Processed By:

