

LEGEND

— Provincial Highway

— County Road

— Local Road

- - - Seasonal Road

— Agricultural

— Special Agriculture

— Rural

— Primary Settlement Area

— Secondary Settlement Area

— Tertiary Settlement Area

— Inland Lakes & Shoreline

— Recreational Resort Area

— Space Extensive Commercial

— Space Extensive Industrial

— Hazard Lands

— Provincially Significant Wetlands

— Niagara Escarpment Plan Boundary **

— Niagara Escarpment Development Control Area

— Escarpment Recreation Area

** certain settlement areas within the Niagara Escarpment Plan Boundary may be subject to Development Control.

THE COUNTY OF GREY OFFICIAL PLAN

SECONDARY SCHEDULE Land Use Designations

MAP 2a

THORNBURY - CLARKSBURG

SCALE 1:25 000

INTERACTIVE MAP: maps.grey.ca

DOWNLOAD PDF: grey.ca

GR_OP_SecSched_Map2aThornbury-ClarksburgX11_June25 2012.mxd



LEGEND

- Provincial Highway
- County Road
- Local Road
- - - Seasonal Road
- Agricultural
- Special Agriculture
- Rural
- Primary Settlement Area
- Secondary Settlement Area
- Tertiary Settlement Area

- Inland Lakes & Shoreline
- Recreational Resort Area
- Space Extensive Commercial
- Space Extensive Industrial
- Hazard Lands
- Provincially Significant Wetlands
- Niagara Escarpment Plan Boundary **
- Niagara Escarpment Development Control Area
- Escarpment Recreation Area

** certain settlement areas within the Niagara Escarpment Plan Boundary may be subject to Development Control.

THE COUNTY OF GREY OFFICIAL PLAN

SECONDARY SCHEDULE Land Use Designations

MAP 2b

HEATHCOTE

SCALE 1:10 000

INTERACTIVE MAP: maps.grey.ca
DOWNLOAD PDF: grey.ca

GR_OP_SecSched_Map2bHeathcoteX11_June25 2012.mxd



LEGEND

— Provincial Highway

— County Road

— Local Road

- - - Seasonal Road

— Agricultural

— Special Agriculture

— Rural

— Primary Settlement Area

— Secondary Settlement Area

— Tertiary Settlement Area

— Inland Lakes & Shoreline

— Recreational Resort Area

— Space Extensive Commercial

— Space Extensive Industrial

— Hazard Lands

— Provincially Significant Wetlands

— Niagara Escarpment Plan Boundary **

— Niagara Escarpment Development Control Area

— Escarpment Recreation Area

** certain settlement areas within the Niagara Escarpment Plan Boundary may be subject to Development Control.

THE COUNTY OF GREY OFFICIAL PLAN

SECONDARY SCHEDULE

Land Use Designations

MAP 2c

ROCKLYN

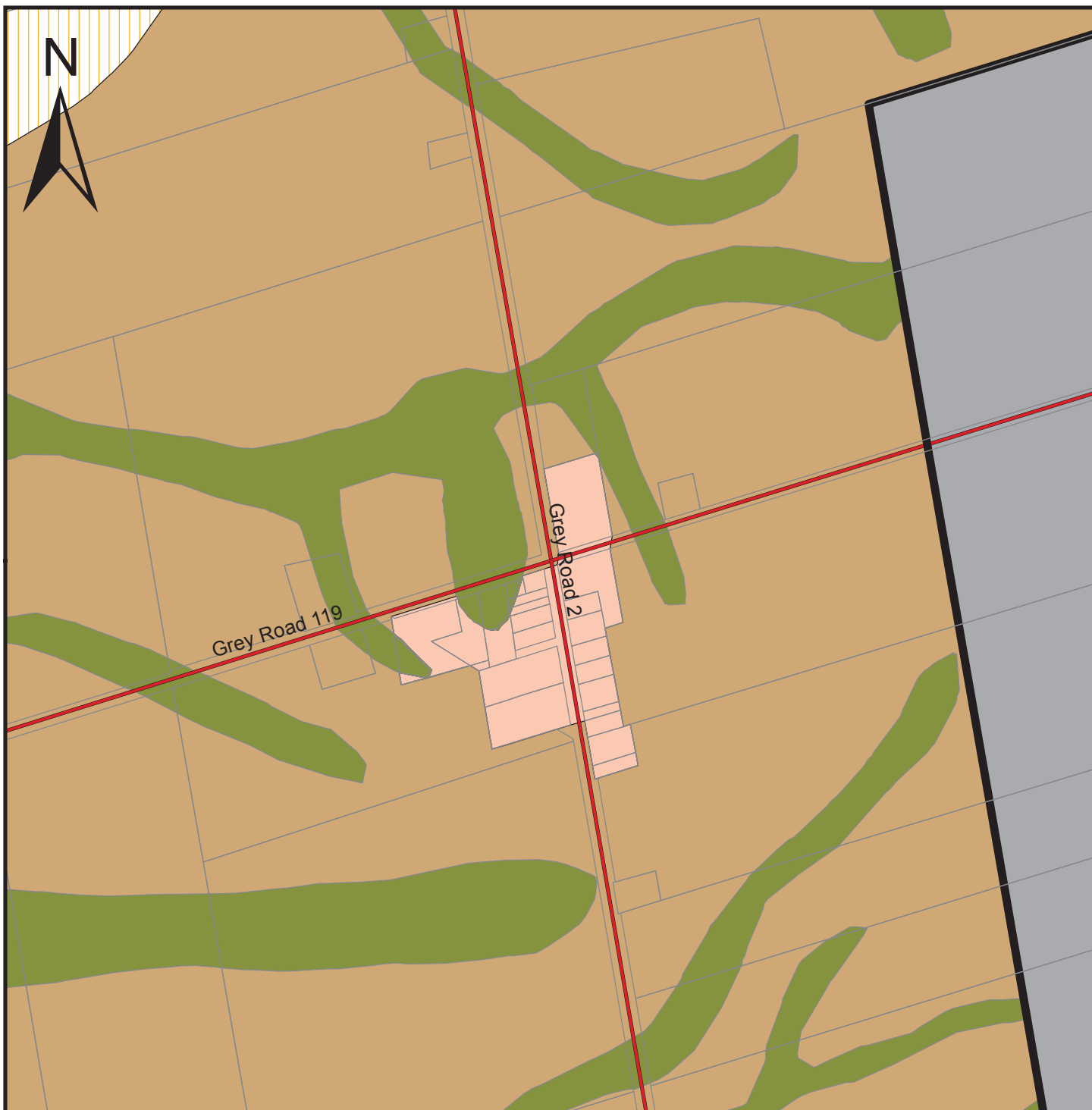
SCALE 1:10 000

INTERACTIVE MAP: maps.grey.ca

DOWNLOAD PDF: grey.ca

GR_OP_SecSched_Map2cRocklynX11_June25 2012.mxd

This map is for illustrative purposes only. Do not rely on this map as being a precise indicator of routes, location of features or surveying purposes. This map may contain cartographical errors or omissions.



LEGEND

- Provincial Highway
- County Road
- Local Road
- Seasonal Road
- Agricultural
- Special Agriculture
- Rural

- Primary Settlement Area
- Secondary Settlement Area
- Tertiary Settlement Area

- Inland Lakes & Shoreline
- Recreational Resort Area
- Space Extensive Commercial
- Space Extensive Industrial

- Hazard Lands
- Provincially Significant Wetlands

Niagara Escarpment Plan Boundary **

Niagara Escarpment Development Control Area

Escarpment Recreation Area

** certain settlement areas within the Niagara Escarpment Plan Boundary may be subject to Development Control.

THE COUNTY OF GREY OFFICIAL PLAN

SECONDARY SCHEDULE Land Use Designations

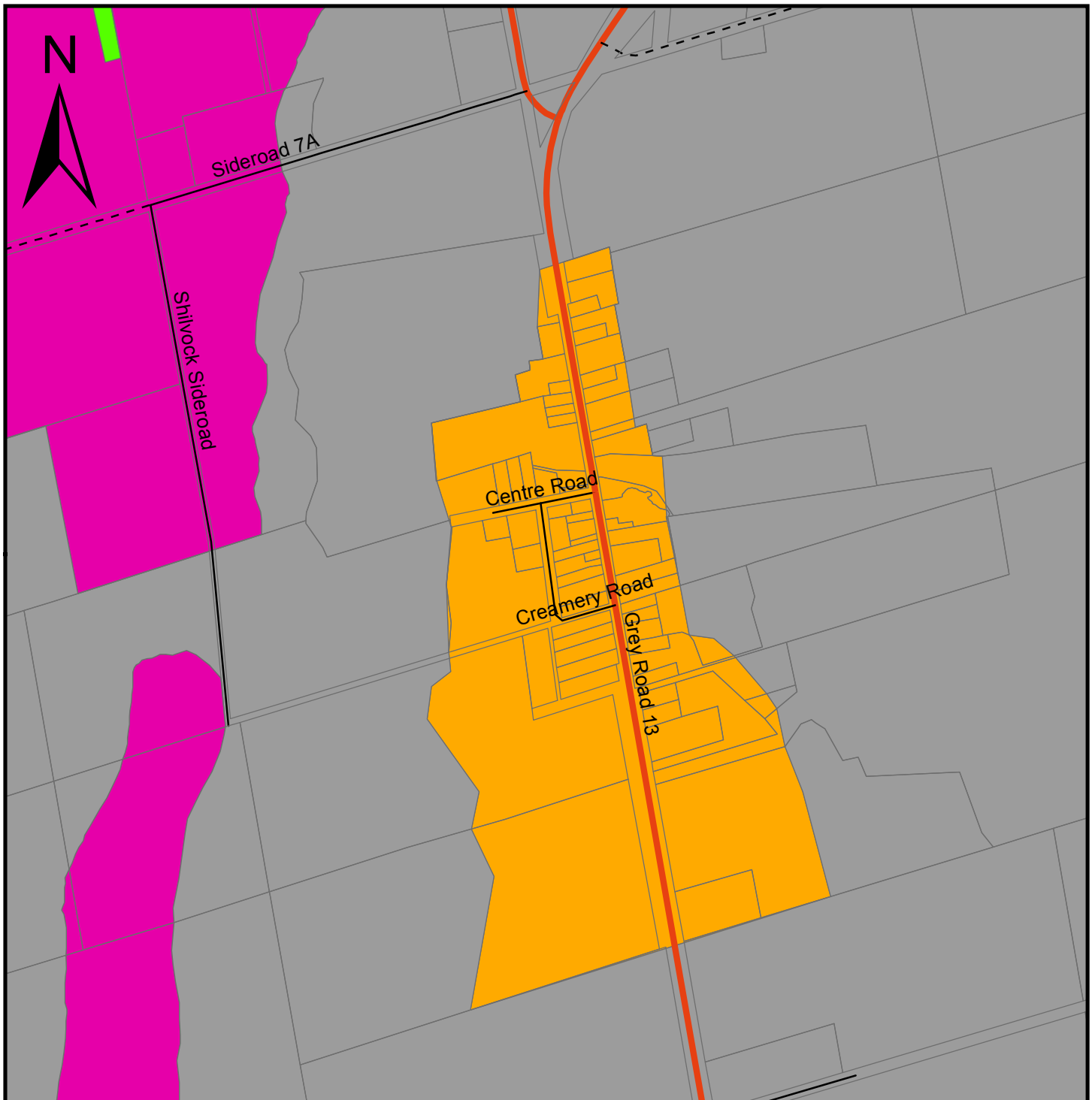
MAP 2d

RAVENNA

SCALE 1:10 000

INTERACTIVE MAP: maps.grey.ca
DOWNLOAD PDF: grey.ca

GR_OP_SecSched_Map2dRaveenaX11_June25 2012.mxd



LEGEND

- | | |
|---------------------------|---|
| Provincial Highway | Inland Lakes & Shoreline |
| County Road | Recreational Resort Area |
| Local Road | Space Extensive Commercial |
| Seasonal Road | Space Extensive Industrial |
| Agricultural | Hazard Lands |
| Special Agriculture | Provincially Significant Wetlands |
| Rural | Niagara Escarpment Plan Boundary ** |
| Primary Settlement Area | Niagara Escarpment Development Control Area |
| Secondary Settlement Area | Escarpment Recreation Area |
| Tertiary Settlement Area | |

** certain settlement areas within the Niagara Escarpment Plan Boundary may be subject to Development Control.

THE COUNTY OF GREY OFFICIAL PLAN

SECONDARY SCHEDULE Land Use Designations

MAP 2e

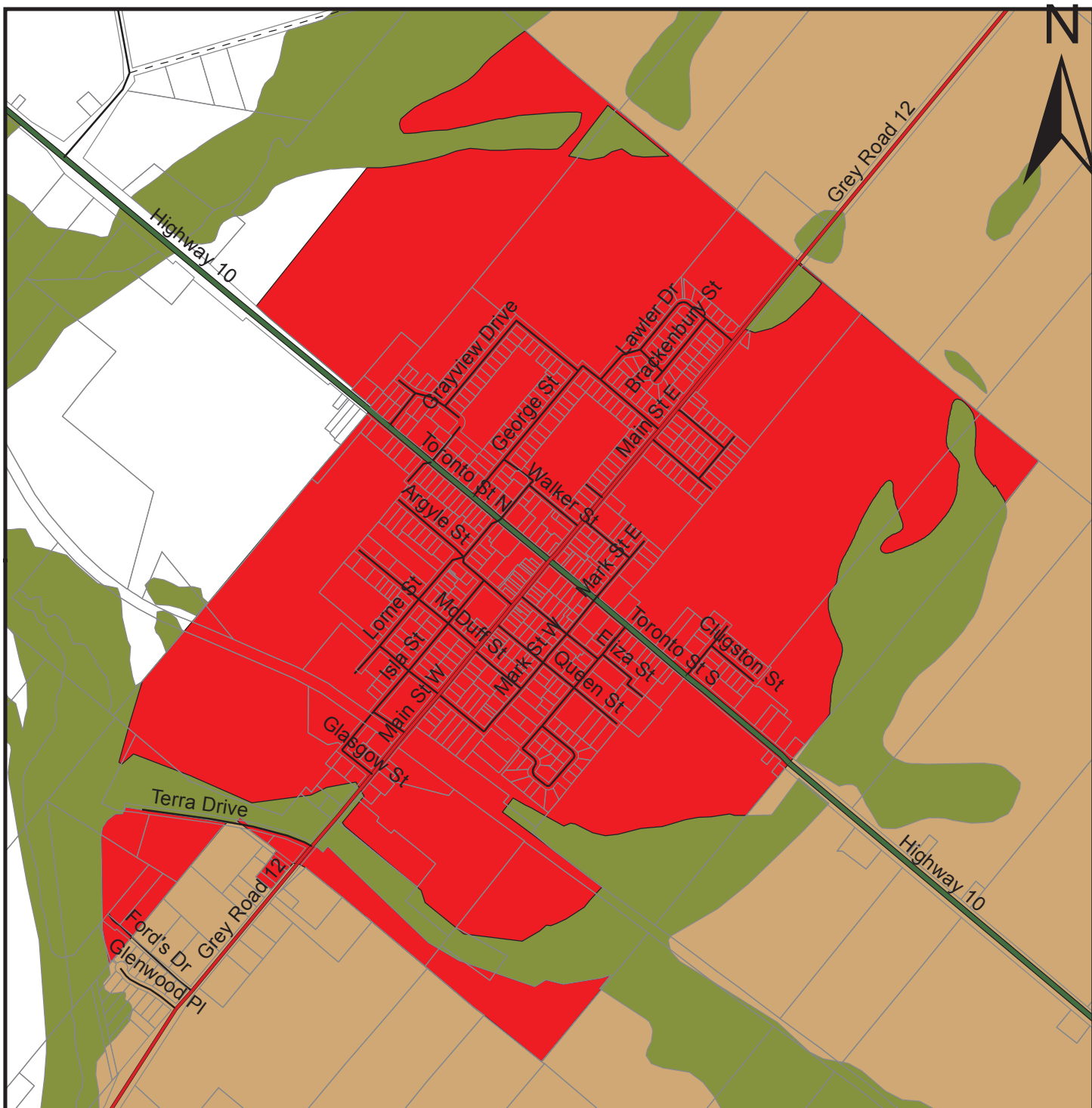
KIMBERLEY

SCALE 1:10 000

INTERACTIVE MAP: maps.grey.ca

DOWNLOAD PDF: grey.ca

GR_OP_SecSched_Map2eKimberleyX11_June25 2012.mxd



LEGEND

- Provincial Highway
- County Road
- Local Road
- Seasonal Road
- Agricultural
- Special Agriculture
- Rural
- Primary Settlement Area
- Secondary Settlement Area
- Tertiary Settlement Area

- Inland Lakes & Shoreline
- Recreational Resort Area
- Space Extensive Commercial
- Space Extensive Industrial
- Hazard Lands
- Provincially Significant Wetlands
- Niagara Escarpment Plan Boundary **
- Niagara Escarpment Development Control Area
- Escarpment Recreation Area

** certain settlement areas within the Niagara Escarpment Plan Boundary may be subject to Development Control.

THE COUNTY OF GREY OFFICIAL PLAN

SECONDARY SCHEDULE Land Use Designations

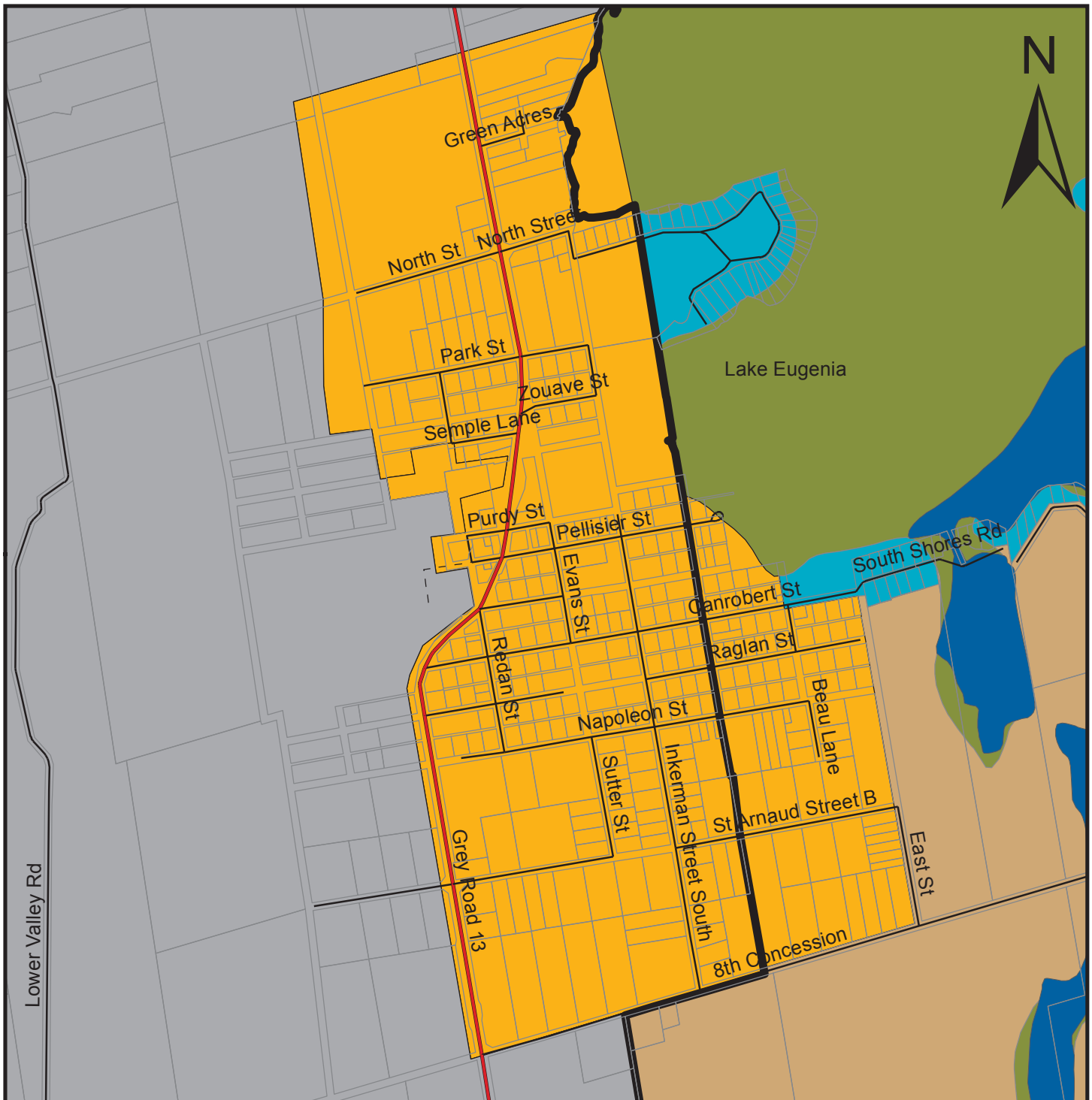
MAP 2f

MARKDALE

SCALE 1:15 000

INTERACTIVE MAP: maps.grey.ca
 DOWNLOAD PDF: grey.ca

GR_OP_SecSched_Map2fMarkdaleX11_June25 2012.mxd



LEGEND

- Provincial Highway
- County Road
- Local Road
- Seasonal Road
- Agricultural
- Special Agriculture
- Rural
- Primary Settlement Area
- Secondary Settlement Area
- Tertiary Settlement Area

- Inland Lakes & Shoreline
- Recreational Resort Area
- Space Extensive Commercial
- Space Extensive Industrial
- Hazard Lands
- Provincially Significant Wetlands
- Niagara Escarpment Plan Boundary **
- Niagara Escarpment Development Control Area
- Escarpment Recreation Area

** certain settlement areas within the Niagara Escarpment Plan Boundary may be subject to Development Control.

THE COUNTY OF GREY OFFICIAL PLAN

SECONDARY SCHEDULE Land Use Designations

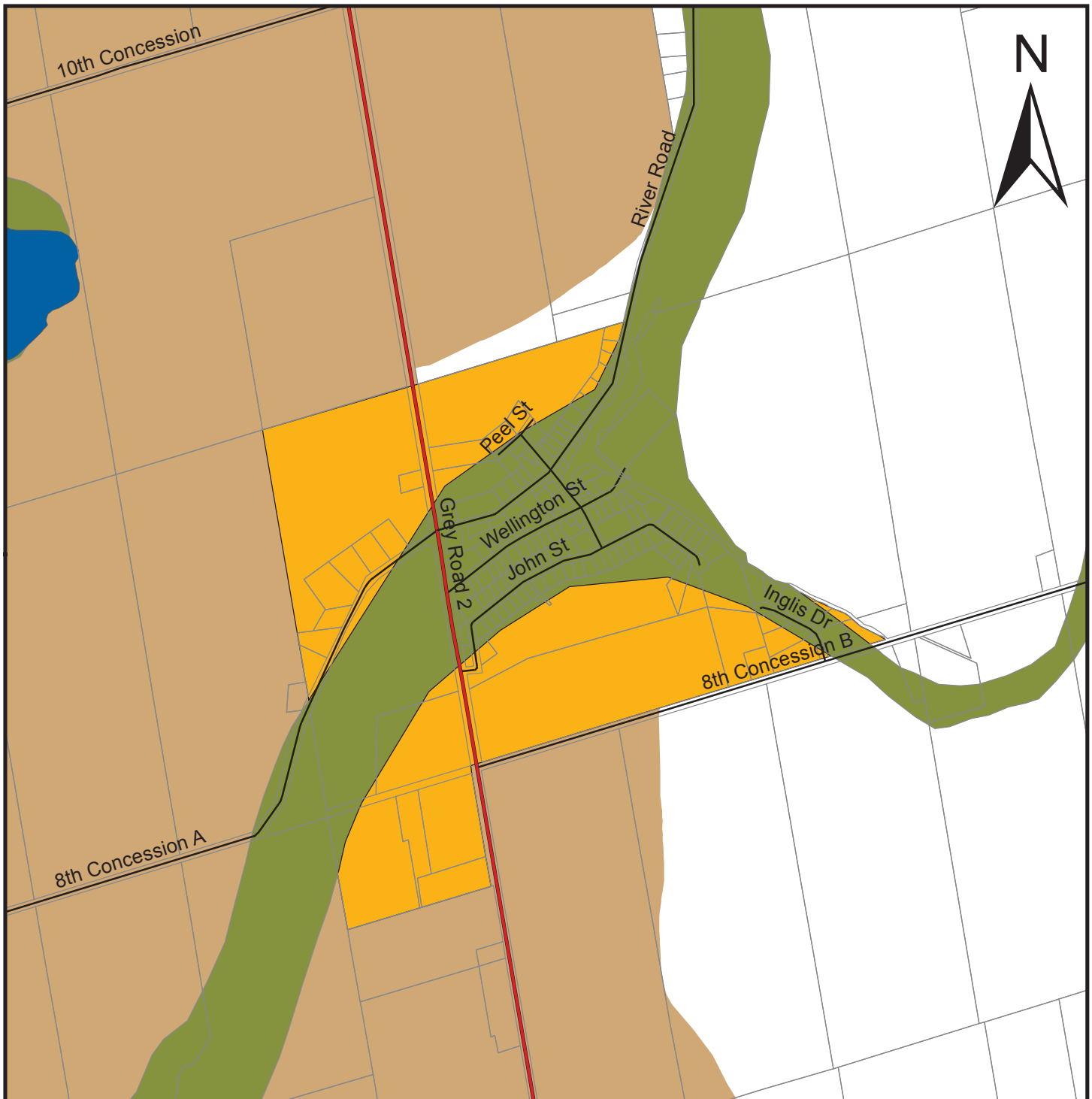
MAP 2g

EUGENIA

SCALE 1:15 000

INTERACTIVE MAP: maps.grey.ca
 DOWNLOAD PDF: grey.ca

GR_OP_SecSched_Map2gEugeniaX11_June25 2012.mxd



LEGEND

- Provincial Highway
- County Road
- Local Road
- Seasonal Road
- Agricultural
- Special Agriculture
- Rural
- Primary Settlement Area
- Secondary Settlement Area
- Tertiary Settlement Area

- Inland Lakes & Shoreline
- Recreational Resort Area
- Space Extensive Commercial
- Space Extensive Industrial
- Hazard Lands
- Provincially Significant Wetlands
- Niagara Escarpment Plan Boundary **
- Niagara Escarpment Development Control Area
- Escarpment Recreation Area

** certain settlement areas within the Niagara Escarpment Plan Boundary may be subject to Development Control.

THE COUNTY OF GREY OFFICIAL PLAN

SECONDARY SCHEDULE Land Use Designations

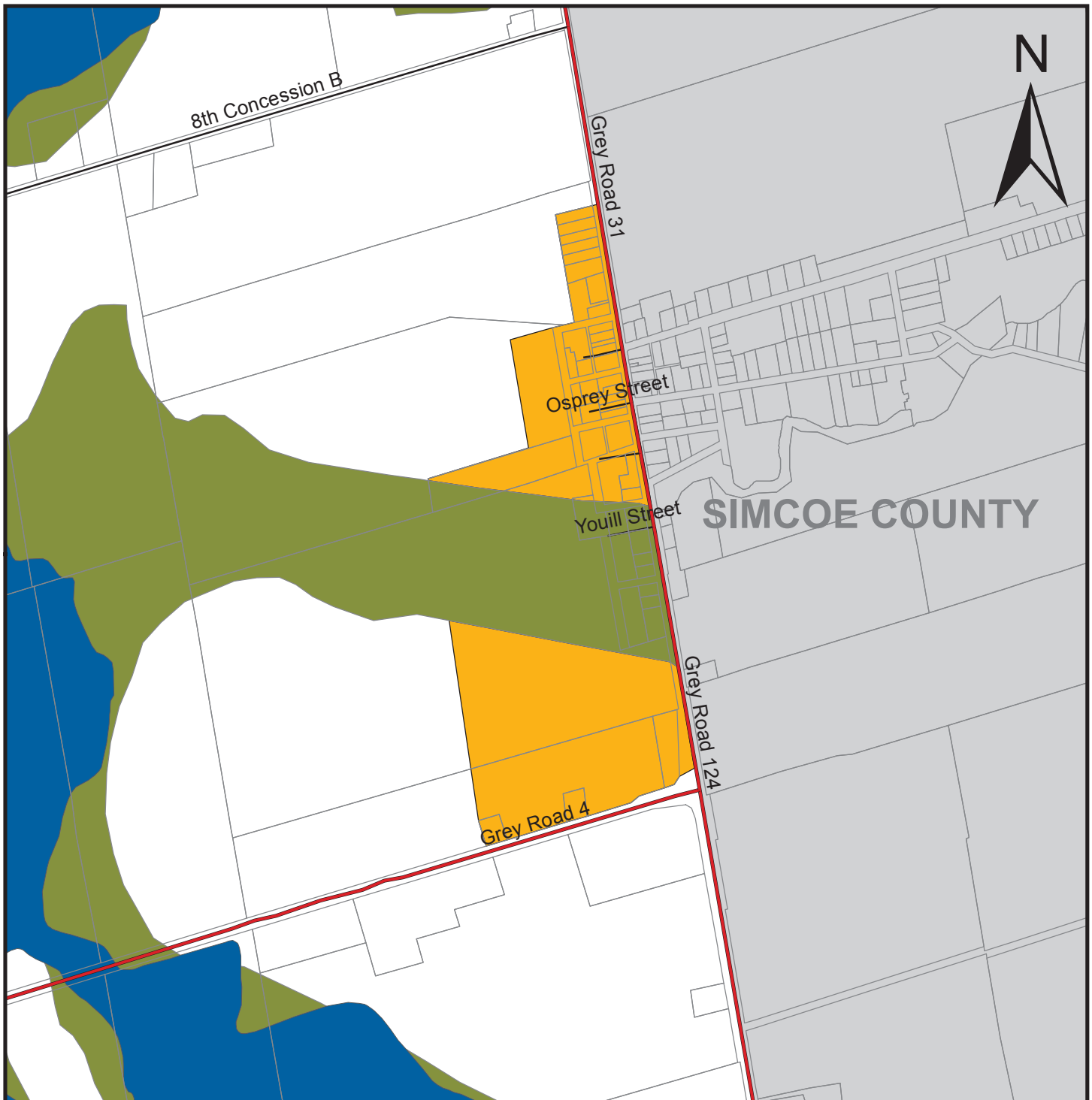
MAP 2h

FEVERSHAM

SCALE 1:15 000

INTERACTIVE MAP: maps.grey.ca
DOWNLOAD PDF: grey.ca

GR_OP_SecSched_Map2hFevershamX11_June25 2012.mxd



LEGEND

— Provincial Highway

— County Road

— Local Road

- - - Seasonal Road

— Agricultural

— Special Agriculture

— Rural

— Primary Settlement Area

— Secondary Settlement Area

— Tertiary Settlement Area

— Inland Lakes & Shoreline

— Recreational Resort Area

— Space Extensive Commercial

— Space Extensive Industrial

— Hazard Lands

— Provincially Significant Wetlands

— Niagara Escarpment Plan Boundary **

— Niagara Escarpment Development Control Area

— Escarpment Recreation Area

** certain settlement areas within the Niagara Escarpment Plan Boundary may be subject to Development Control.

THE COUNTY OF GREY OFFICIAL PLAN

SECONDARY SCHEDULE

Land Use Designations

MAP 2i

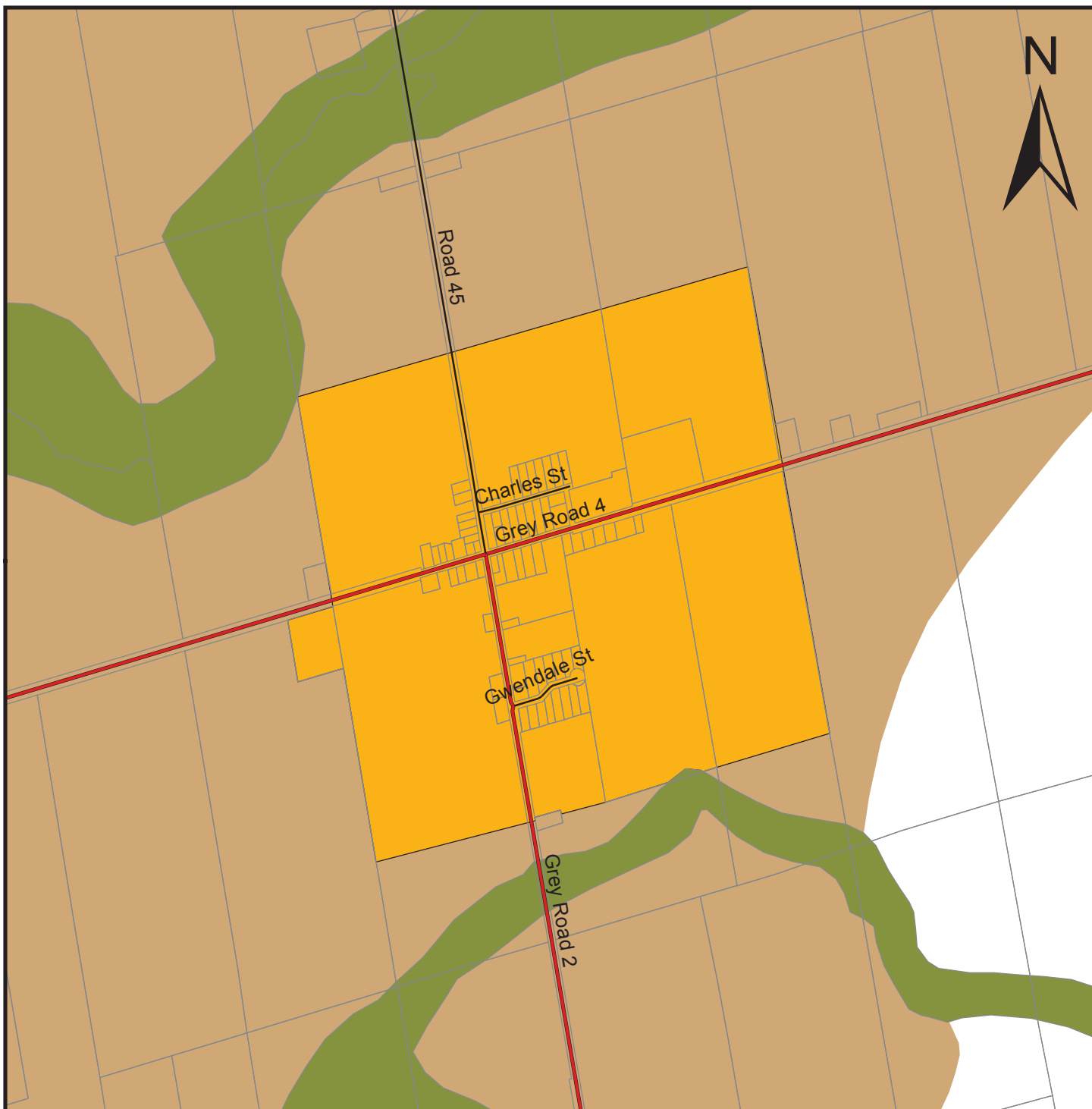
SINGHAMPTON

SCALE 1:15 000

INTERACTIVE MAP: maps.grey.ca

DOWNLOAD PDF: grey.ca

GR_OP_SecSched_Map2iSinghamptonX11_June25 2012.mxd



LEGEND

- Provincial Highway
- County Road
- Local Road
- Seasonal Road
- Agricultural
- Special Agriculture
- Rural
- Primary Settlement Area
- Secondary Settlement Area
- Tertiary Settlement Area

- Inland Lakes & Shoreline
- Recreational Resort Area
- Space Extensive Commercial
- Space Extensive Industrial
- Hazard Lands
- Provincially Significant Wetlands
- Niagara Escarpment Plan Boundary **
- Niagara Escarpment Development Control Area
- Escarpment Recreation Area

** certain settlement areas within the Niagara Escarpment Plan Boundary may be subject to Development Control.

THE COUNTY OF GREY OFFICIAL PLAN

SECONDARY SCHEDULE Land Use Designations

MAP 2j

MAXWELL

SCALE 1:15 000

INTERACTIVE MAP: maps.grey.ca
DOWNLOAD PDF: grey.ca

GR_OP_SecSched_Map2jMaxwellX11_June25 2012.mxd



LEGEND

Provincial Highway

County Road

Local Road

Seasonal Road

Agricultural

Special Agriculture

Rural

Primary Settlement Area

Secondary Settlement Area

Tertiary Settlement Area

Inland Lakes & Shoreline

Recreational Resort Area

Space Extensive Commercial

Space Extensive Industrial

Hazard Lands

Provincially Significant Wetlands

Niagara Escarpment Plan Boundary **

Niagara Escarpment Development Control Area

Escarpment Recreation Area

** certain settlement areas within the Niagara Escarpment Plan Boundary may be subject to Development Control.

THE COUNTY OF GREY OFFICIAL PLAN

SECONDARY SCHEDULE

Land Use Designations

MAP 2k

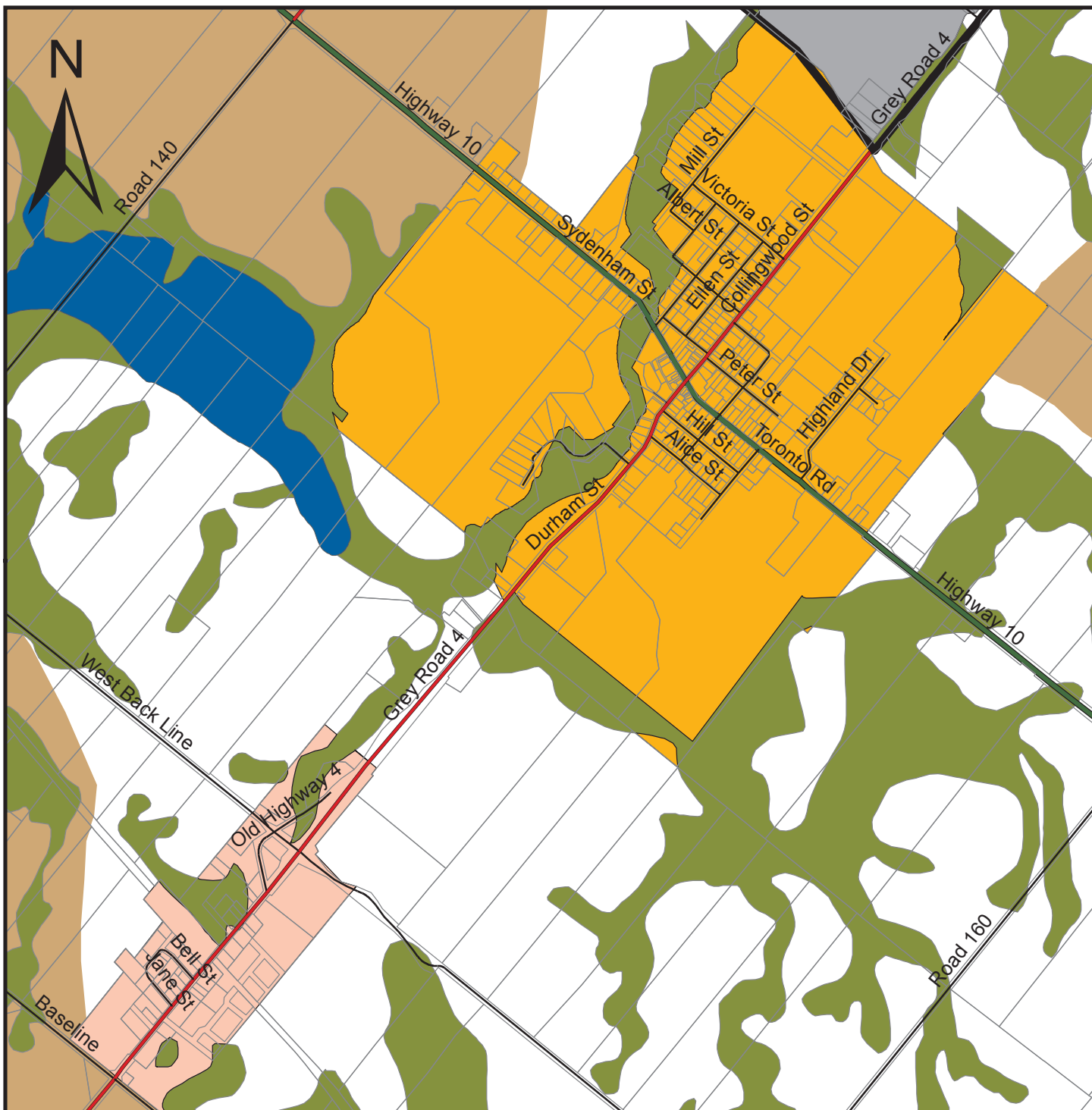
BADJEROS

SCALE 1:5000

INTERACTIVE MAP: maps.grey.ca

DOWNLOAD PDF: grey.ca

GR_OP_SecSched_Map2kBadjerosX11_June25 2012.mxd



LEGEND

— Provincial Highway

— County Road

— Local Road

- - - Seasonal Road

— Agricultural

— Special Agriculture

— Rural

— Primary Settlement Area

— Secondary Settlement Area

— Tertiary Settlement Area

— Inland Lakes & Shoreline

— Recreational Resort Area

— Space Extensive Commercial

— Space Extensive Industrial

— Hazard Lands

— Provincially Significant Wetlands

— Niagara Escarpment Plan Boundary **

— Niagara Escarpment Development Control Area

— Escarpment Recreation Area

** certain settlement areas within the Niagara Escarpment Plan Boundary may be subject to Development Control.

THE COUNTY OF GREY OFFICIAL PLAN

SECONDARY SCHEDULE Land Use Designations

MAP 21

FLESHERTON - CEYLON

SCALE 1:20 000

INTERACTIVE MAP: maps.grey.ca

DOWNLOAD PDF: grey.ca

GR_OP_SecSched_Map21FleshertonX11_June25 2012.mxd



LEGEND

- Provincial Highway
- County Road
- Local Road
- Seasonal Road
- Agricultural
- ▨ Special Agriculture
- Rural
- Primary Settlement Area
- Secondary Settlement Area
- Tertiary Settlement Area

- Inland Lakes & Shoreline
- Recreational Resort Area
- Space Extensive Commercial
- Space Extensive Industrial
- Hazard Lands
- Provincially Significant Wetlands
- Niagara Escarpment Plan Boundary **
- Niagara Escarpment Development Control Area
- Escarpment Recreation Area

** certain settlement areas within the Niagara Escarpment Plan Boundary may be subject to Development Control.

THE COUNTY OF GREY OFFICIAL PLAN

SECONDARY SCHEDULE

Land Use Designations

MAP 2m

PRICEVILLE

SCALE 1:15 000

INTERACTIVE MAP: maps.grey.ca
 DOWNLOAD PDF: grey.ca

GR_OP_SecSched_Map2mPricevilleX11_June25 2012.mxd



LEGEND

— Provincial Highway

— County Road

— Local Road

- - - Seasonal Road

— Agricultural

— Special Agriculture

— Rural

— Primary Settlement Area

— Secondary Settlement Area

— Tertiary Settlement Area

— Inland Lakes & Shoreline

— Recreational Resort Area

— Space Extensive Commercial

— Space Extensive Industrial

— Hazard Lands

— Provincially Significant Wetlands

— Niagara Escarpment Plan Boundary **

— Niagara Escarpment Development Control Area

— Escarpment Recreation Area

** certain settlement areas within the Niagara Escarpment Plan Boundary may be subject to Development Control.

THE COUNTY OF GREY OFFICIAL PLAN

SECONDARY SCHEDULE Land Use Designations

MAP 2n

VARNEY

SCALE 1:15 000

INTERACTIVE MAP: maps.grey.ca

DOWNLOAD PDF: grey.ca

GR_OP_SecSched_Map2nVarneyX11_June25 2012.mxd



LEGEND

- Provincial Highway
- County Road
- Local Road
- Seasonal Road
- Agricultural
- Special Agriculture
- Rural
- Primary Settlement Area
- Secondary Settlement Area
- Tertiary Settlement Area

- Inland Lakes & Shoreline
- Recreational Resort Area
- Space Extensive Commercial
- Space Extensive Industrial
- Hazard Lands
- Provincially Significant Wetlands
- Niagara Escarpment Plan Boundary **
- Niagara Escarpment Development Control Area
- Escarpment Recreation Area

** certain settlement areas within the Niagara Escarpment Plan Boundary may be subject to Development Control.

THE COUNTY OF GREY OFFICIAL PLAN

SECONDARY SCHEDULE Land Use Designations

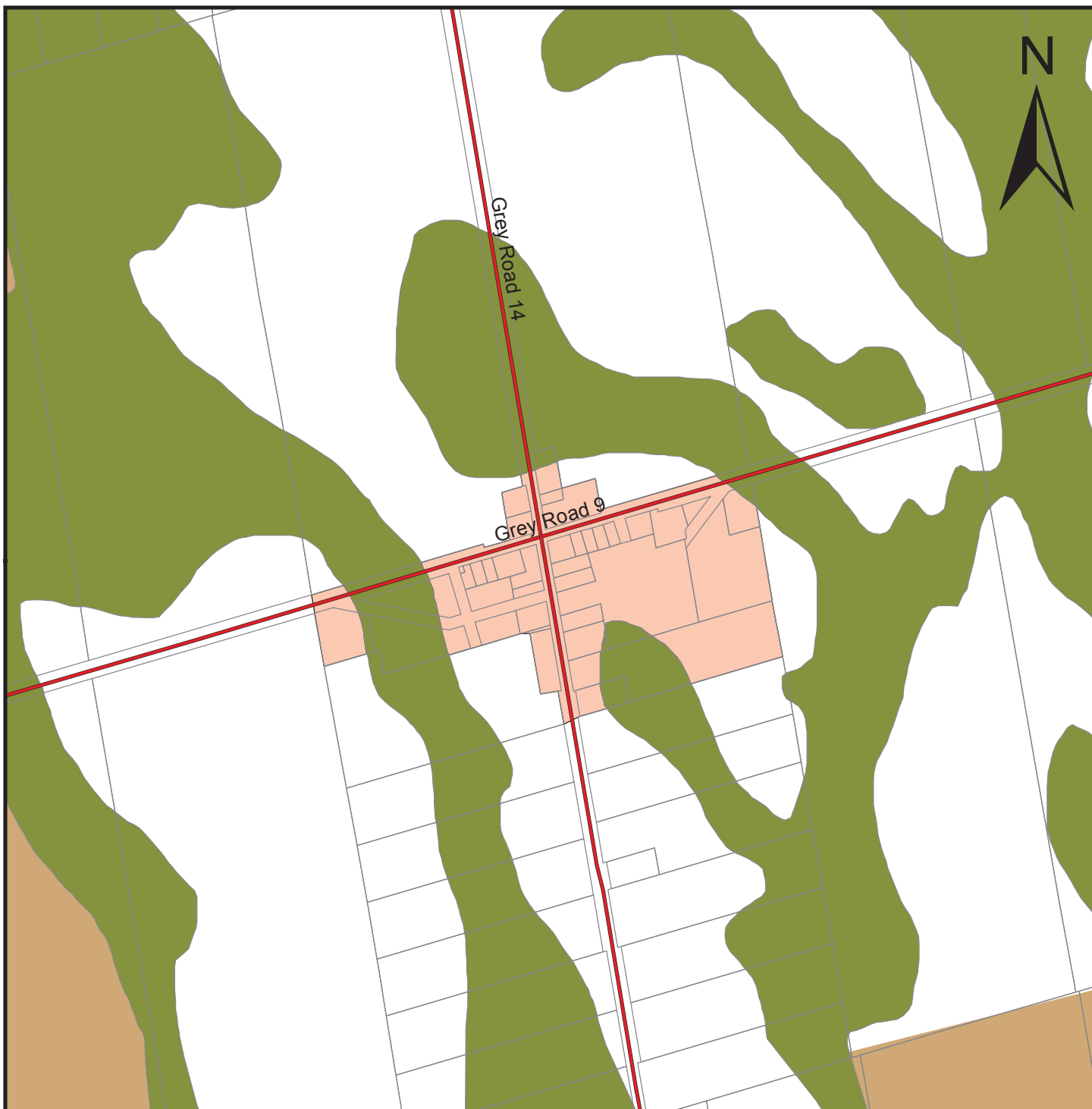
MAP 2o

HOLSTEIN

SCALE 1:15 000

INTERACTIVE MAP: maps.grey.ca
 DOWNLOAD PDF: grey.ca

GR_OP_SecSched_Map2oHolsteinX11_June25 2012.mxd



LEGEND

— Provincial Highway

— County Road

— Local Road

- - - Seasonal Road

— Agricultural

— Special Agriculture

— Rural

— Primary Settlement Area

— Secondary Settlement Area

— Tertiary Settlement Area

— Inland Lakes & Shoreline

— Recreational Resort Area

— Space Extensive Commercial

— Space Extensive Industrial

— Hazard Lands

— Provincially Significant Wetlands

— Niagara Escarpment Plan Boundary **

— Niagara Escarpment Development Control Area

— Escarpment Recreation Area

** certain settlement areas within the Niagara Escarpment Plan Boundary may be subject to Development Control.

THE COUNTY OF GREY OFFICIAL PLAN

SECONDARY SCHEDULE

Land Use Designations

MAP 2p

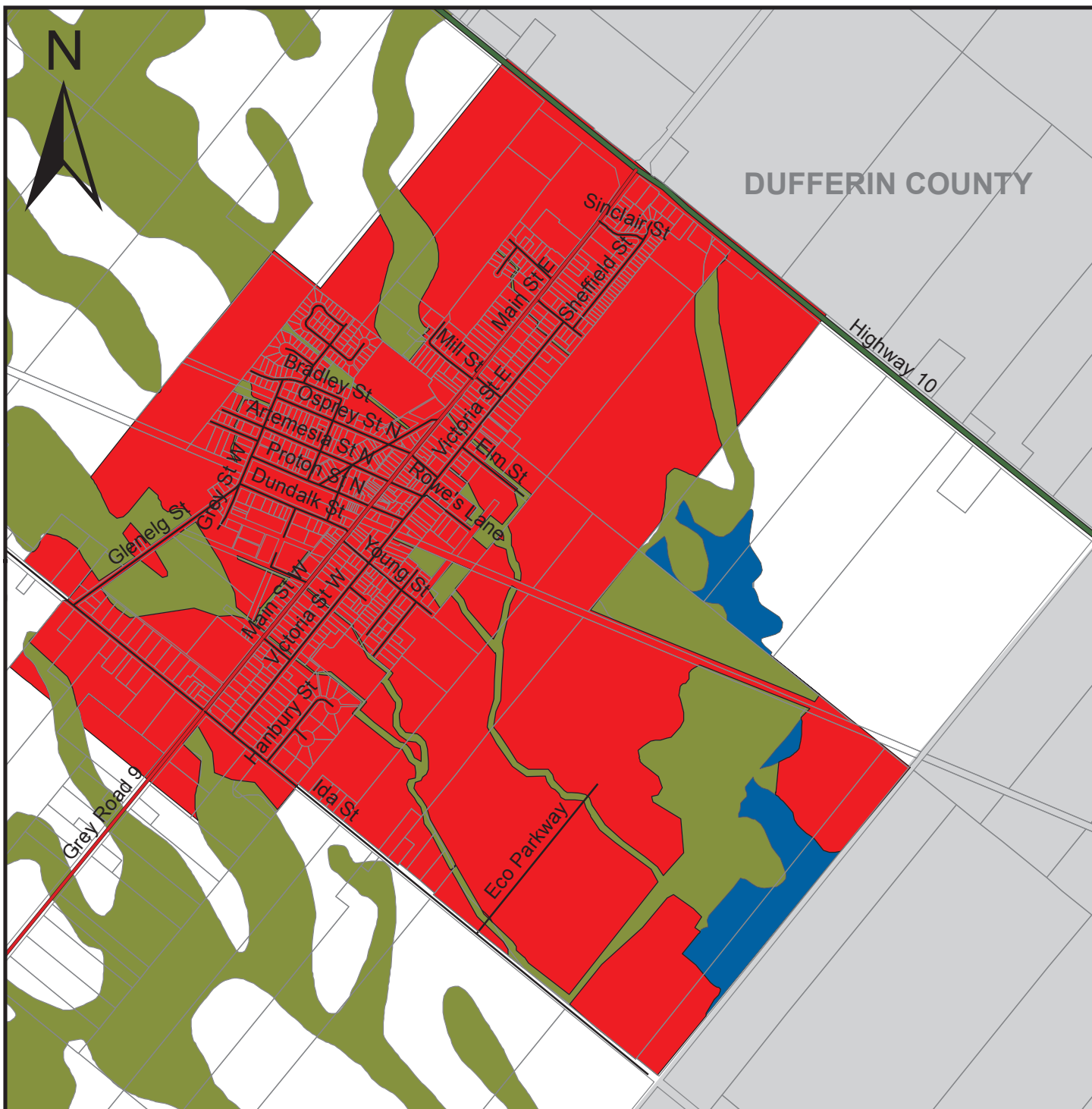
HOPEVILLE

SCALE 1:10 000

INTERACTIVE MAP: maps.grey.ca

DOWNLOAD PDF: grey.ca

GR_OP_SecSched_Map2pHopevilleX11_June25 2012.mxd



LEGEND

— Provincial Highway

— County Road

— Local Road

- - - Seasonal Road

— Agricultural

— Special Agriculture

— Rural

— Primary Settlement Area

— Secondary Settlement Area

— Tertiary Settlement Area

— Inland Lakes & Shoreline

— Recreational Resort Area

— Space Extensive Commercial

— Space Extensive Industrial

— Hazard Lands

— Provincially Significant Wetlands

— Niagara Escarpment Plan Boundary **

— Niagara Escarpment Development Control Area

— Escarpment Recreation Area

** certain settlement areas within the Niagara Escarpment Plan Boundary may be subject to Development Control.

THE COUNTY OF GREY OFFICIAL PLAN

SECONDARY SCHEDULE

Land Use Designations

MAP 2q

DUNDALK

SCALE 1:20 000

INTERACTIVE MAP: maps.grey.ca

DOWNLOAD PDF: grey.ca

GR_OP_SecSched_Map2qDundalkX11_June25 2012.mxd



LEGEND

— Provincial Highway

— County Road

— Local Road

- - - Seasonal Road

— Agricultural

— Special Agriculture

— Rural

— Primary Settlement Area

— Secondary Settlement Area

— Tertiary Settlement Area

— Inland Lakes & Shoreline

— Recreational Resort Area

— Space Extensive Commercial

— Space Extensive Industrial

— Hazard Lands

— Provincially Significant Wetlands

— Niagara Escarpment Plan Boundary **

— Niagara Escarpment Development Control Area

— Escarpment Recreation Area

** certain settlement areas within the Niagara Escarpment Plan Boundary may be subject to Development Control.

THE COUNTY OF GREY OFFICIAL PLAN

SECONDARY SCHEDULE Land Use Designations

MAP 2r

DROMORE

SCALE 1:10 000

INTERACTIVE MAP: maps.grey.ca

DOWNLOAD PDF: grey.ca

GR_OP_SecSched_Map2rDromoreX11_June25 2012.mxd



LEGEND

— Provincial Highway

— County Road

— Local Road

- - - Seasonal Road

— Agricultural

— Special Agriculture

— Rural

— Primary Settlement Area

— Secondary Settlement Area

— Tertiary Settlement Area

— Inland Lakes & Shoreline

— Recreational Resort Area

— Space Extensive Commercial

— Space Extensive Industrial

— Hazard Lands

— Provincially Significant Wetlands

— Niagara Escarpment Plan Boundary **

— Niagara Escarpment Development Control Area

— Escarpment Recreation Area

** certain settlement areas within the Niagara Escarpment Plan Boundary may be subject to Development Control.

THE COUNTY OF GREY OFFICIAL PLAN

SECONDARY SCHEDULE

Land Use Designations

MAP 2s

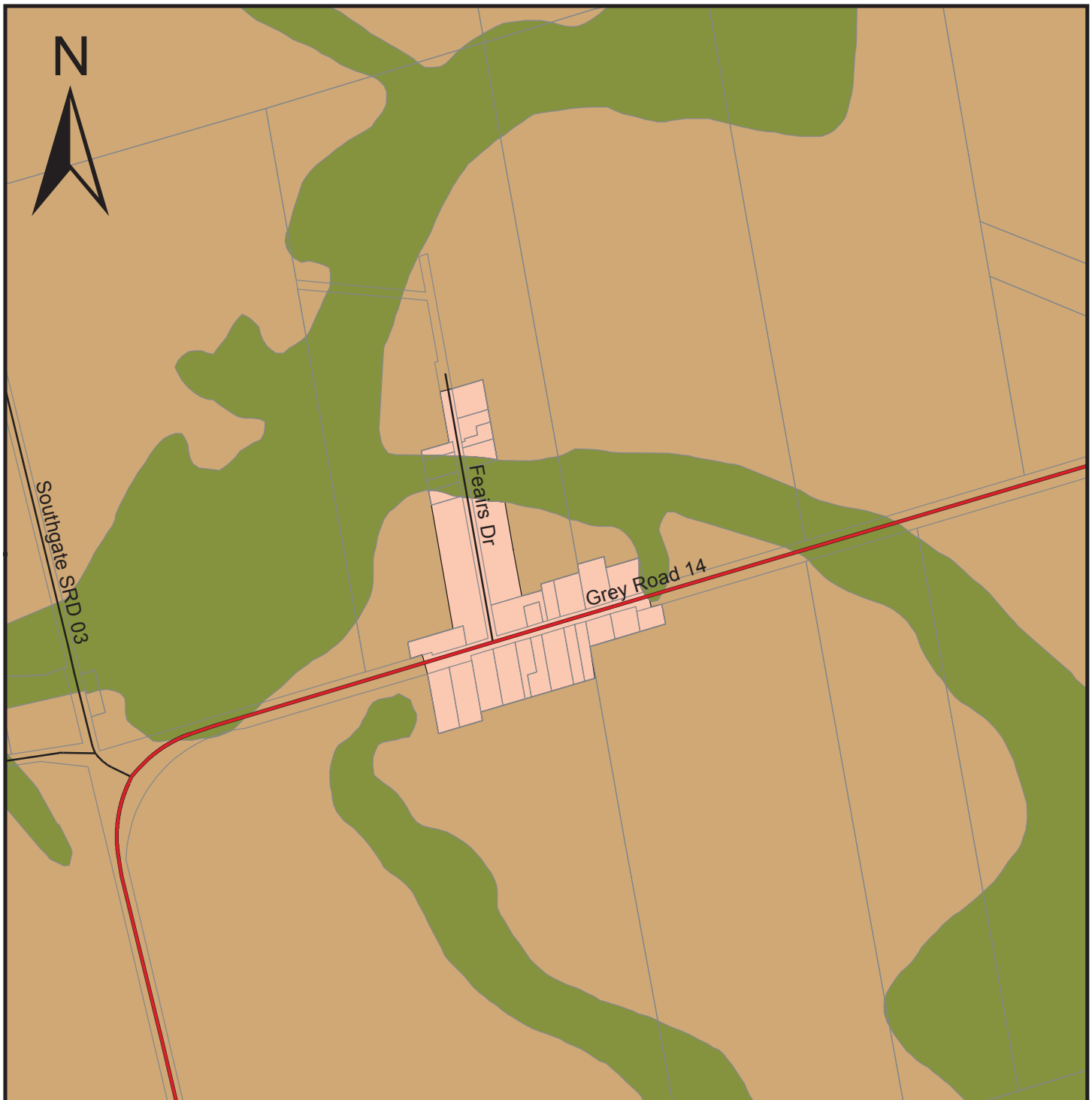
SWINTON PARK

SCALE 1:10 000

INTERACTIVE MAP: maps.grey.ca

DOWNLOAD PDF: grey.ca

GR_OP_SecSched_Map2sSwintonParkX11_June25 2012.mxd



LEGEND

- Provincial Highway
- County Road
- Local Road
- Seasonal Road
- Agricultural
- Special Agriculture
- Rural
- Primary Settlement Area
- Secondary Settlement Area
- Tertiary Settlement Area

- Inland Lakes & Shoreline
- Recreational Resort Area
- Space Extensive Commercial
- Space Extensive Industrial
- Hazard Lands
- Provincially Significant Wetlands
- Niagara Escarpment Plan Boundary **
- Niagara Escarpment Development Control Area
- Escarpment Recreation Area

** certain settlement areas within the Niagara Escarpment Plan Boundary may be subject to Development Control.

THE COUNTY OF GREY OFFICIAL PLAN

SECONDARY SCHEDULE Land Use Designations

MAP 2t

CEDARVILLE

SCALE 1:10 000

INTERACTIVE MAP: maps.grey.ca

DOWNLOAD PDF: grey.ca

GR_OP_SecSched_Map2tCedarvilleX11_June25 2012.mxd