

LEGEND

- Provincial Highway
- County Road
- Local Road
- Seasonal Road
- Agricultural
- Special Agriculture
- Rural
- Primary Settlement Area
- Secondary Settlement Area
- Tertiary Settlement Area

- Inland Lakes & Shoreline
- Recreational Resort Area
- Space Extensive Commercial
- Space Extensive Industrial
- Hazard Lands
- Provincially Significant Wetlands
- Niagara Escarpment Plan Boundary **
- Niagara Escarpment Development Control Area
- Escarpment Recreation Area

** certain settlement areas within the Niagara Escarpment Plan Boundary may be subject to Development Control.

THE COUNTY OF GREY OFFICIAL PLAN

SECONDARY SCHEDULE Land Use Designations

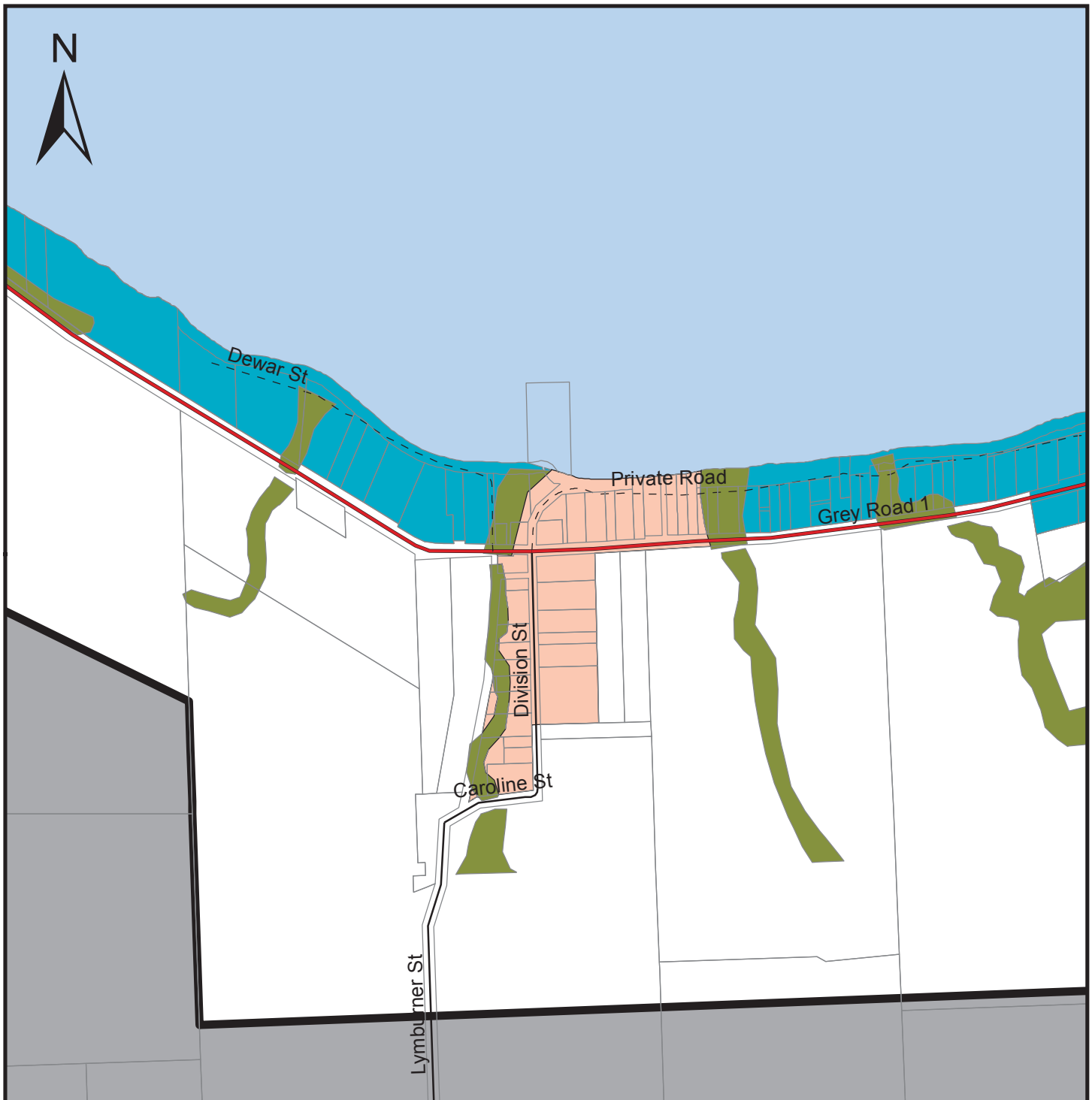
MAP 1a

OXENDEN

SCALE 1:10 000

INTERACTIVE MAP: maps.grey.ca
 DOWNLOAD PDF: grey.ca

GR_OP_SecSched_Map1aOxendenX11_June25 2012.mxd



LEGEND

- | | |
|---------------------------|---|
| Provincial Highway | Inland Lakes & Shoreline |
| County Road | Recreational Resort Area |
| Local Road | Space Extensive Commercial |
| Seasonal Road | Space Extensive Industrial |
| Agricultural | Hazard Lands |
| Special Agriculture | Provincially Significant Wetlands |
| Rural | Niagara Escarpment Plan Boundary ** |
| Primary Settlement Area | Niagara Escarpment Development Control Area |
| Secondary Settlement Area | Escarpment Recreation Area |
| Tertiary Settlement Area | |

** certain settlement areas within the Niagara Escarpment Plan Boundary may be subject to Development Control.

THE COUNTY OF GREY OFFICIAL PLAN

SECONDARY SCHEDULE Land Use Designations

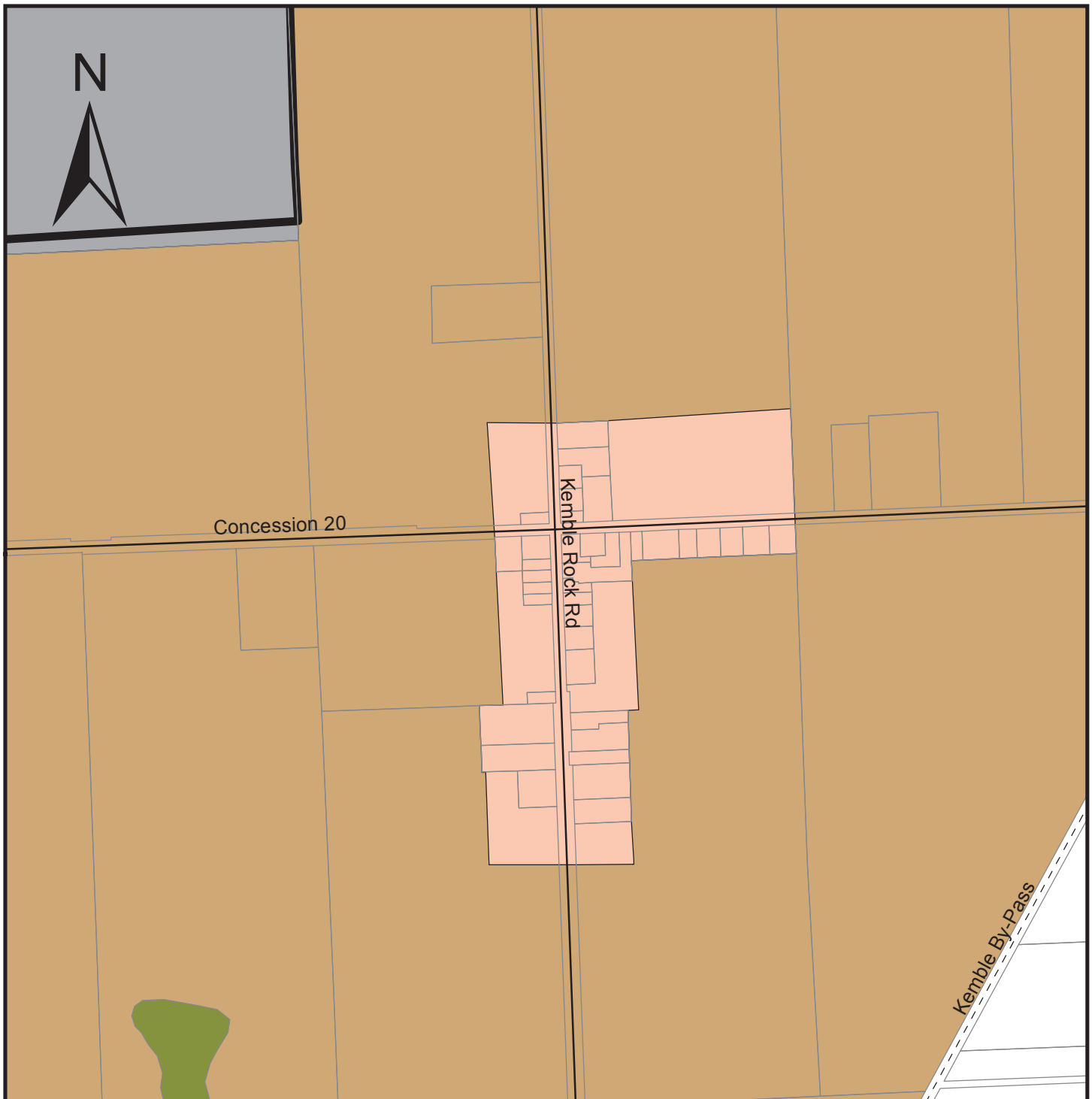
MAP 1b

BIG BAY

SCALE 1:10 000

INTERACTIVE MAP: maps.grey.ca
DOWNLOAD PDF: grey.ca

GR_OP_SecSched_Map1bBigBayX11_June25 2012.mxd



LEGEND

- | | |
|---------------------------|---|
| Provincial Highway | Inland Lakes & Shoreline |
| County Road | Recreational Resort Area |
| Local Road | Space Extensive Commercial |
| Seasonal Road | Space Extensive Industrial |
| Agricultural | Hazard Lands |
| Special Agriculture | Provincially Significant Wetlands |
| Rural | Niagara Escarpment Plan Boundary ** |
| Primary Settlement Area | Niagara Escarpment Development Control Area |
| Secondary Settlement Area | Escarpment Recreation Area |
| Tertiary Settlement Area | |

** certain settlement areas within the Niagara Escarpment Plan Boundary may be subject to Development Control.

THE COUNTY OF GREY OFFICIAL PLAN

SECONDARY SCHEDULE Land Use Designations

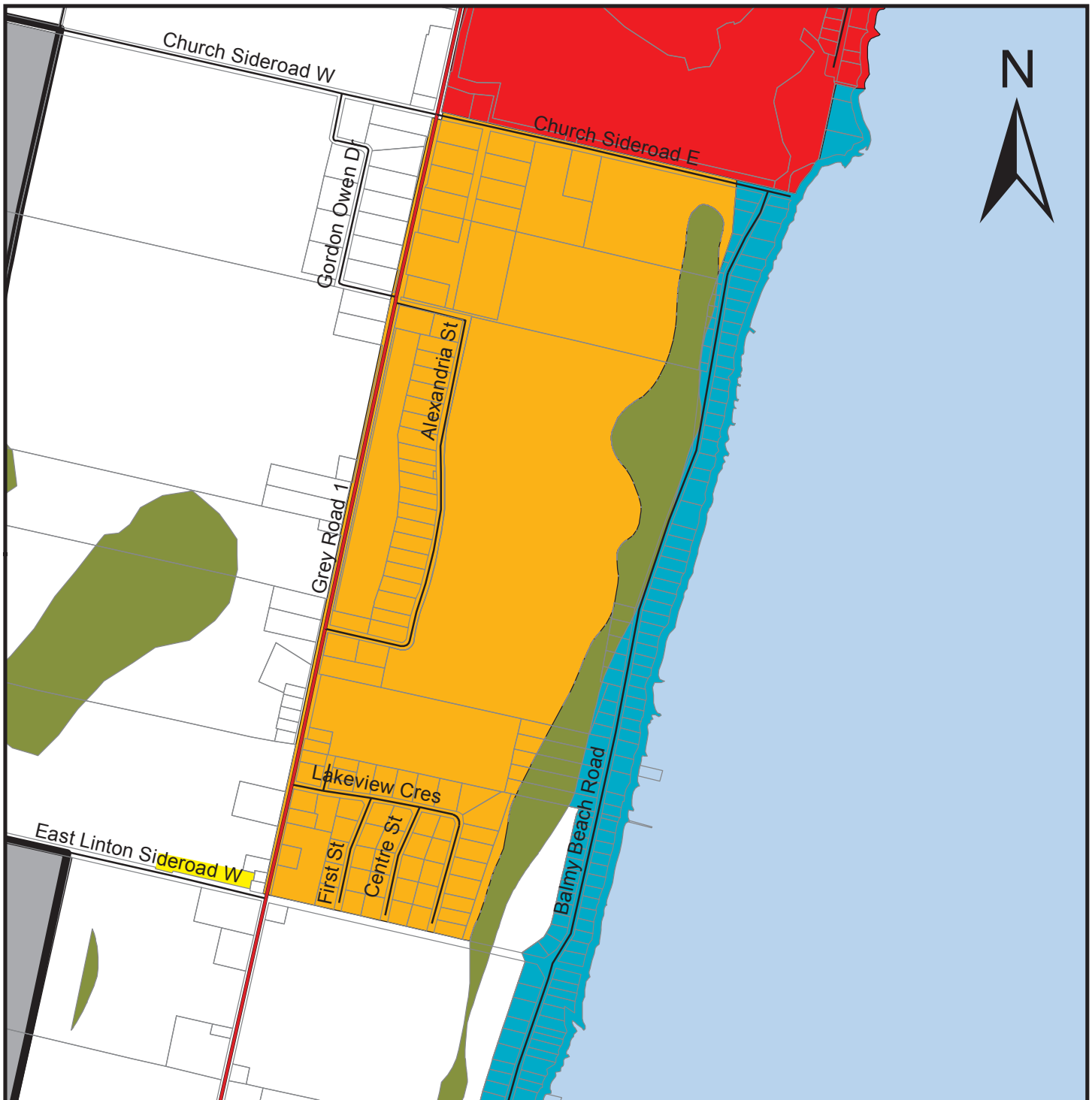
MAP 1c

KEMBLE

SCALE 1:10 000

INTERACTIVE MAP: maps.grey.ca
DOWNLOAD PDF: grey.ca

GR_OP_SecSched_Map1cKembleX11_June25 2012.mxd



LEGEND

— Provincial Highway

— County Road

— Local Road

- - - Seasonal Road

— Agricultural

— Special Agriculture

— Rural

— Primary Settlement Area

— Secondary Settlement Area

— Tertiary Settlement Area

— Inland Lakes & Shoreline

— Recreational Resort Area

— Space Extensive Commercial

— Space Extensive Industrial

— Hazard Lands

— Provincially Significant Wetlands

— Niagara Escarpment Plan Boundary **

— Niagara Escarpment Development Control Area

— Escarpment Recreation Area

** certain settlement areas within the Niagara Escarpment Plan Boundary may be subject to Development Control.

THE COUNTY OF GREY OFFICIAL PLAN

SECONDARY SCHEDULE

Land Use Designations

MAP 1d

EAST LINTON

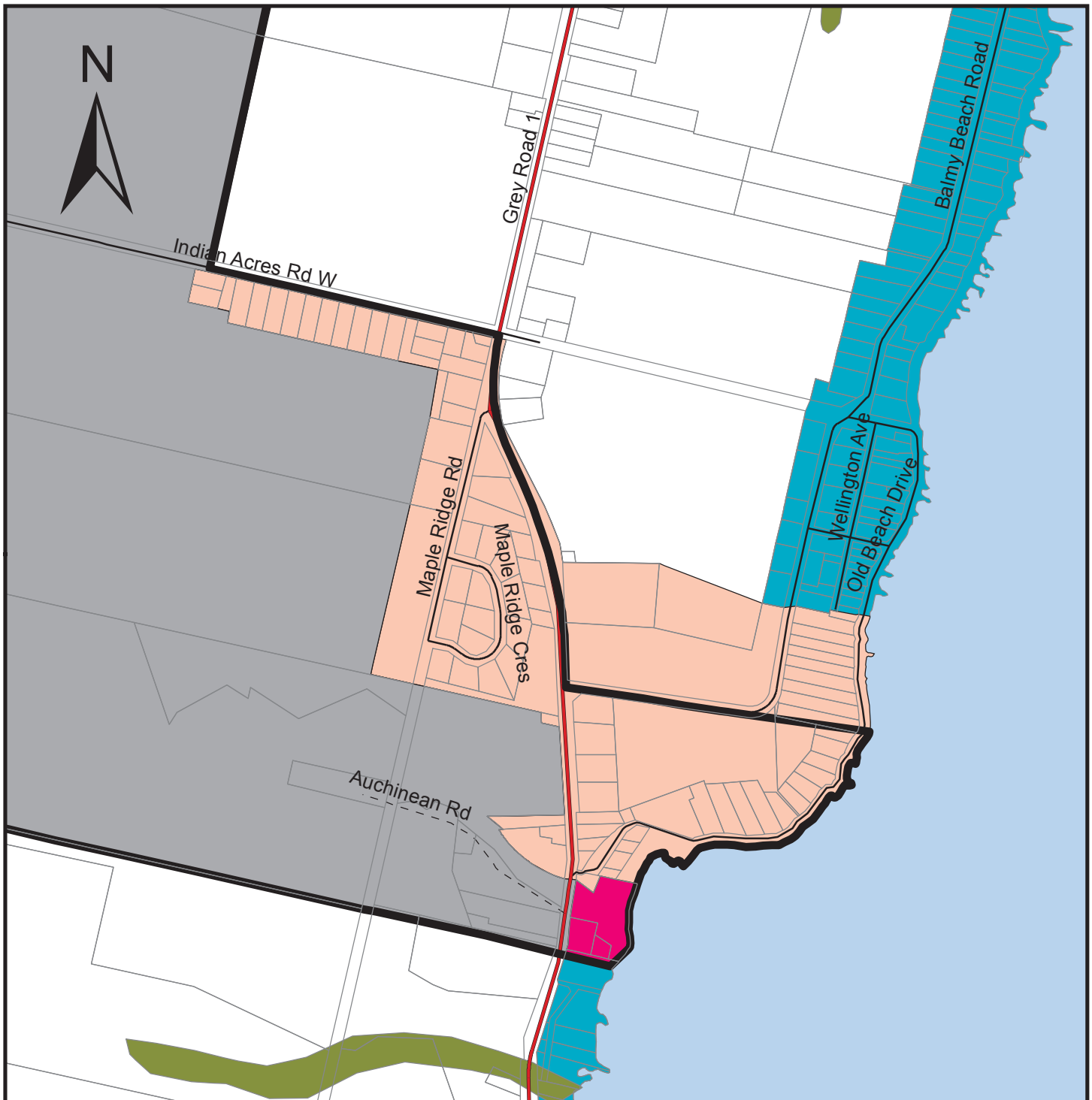
SCALE 1:15 000

INTERACTIVE MAP: maps.grey.ca

DOWNLOAD PDF: grey.ca

GR_OP_SecSched_Map1dEastLintonX11_June25 2012.mxd

This map is for illustrative purposes only. Do not rely on this map as being a precise indicator of routes, location of features or surveying purposes. This map may contain cartographical errors or omissions.



LEGEND

— Provincial Highway

— County Road

— Local Road

- - - Seasonal Road

— Agricultural

— Special Agriculture

— Rural

— Primary Settlement Area

— Secondary Settlement Area

— Tertiary Settlement Area

— Inland Lakes & Shoreline

— Recreational Resort Area

— Space Extensive Commercial

— Space Extensive Industrial

— Hazard Lands

— Provincially Significant Wetlands

— Niagara Escarpment Plan Boundary **

— Niagara Escarpment Development Control Area

— Escarpment Recreation Area

** certain settlement areas within the Niagara Escarpment Plan Boundary may be subject to Development Control.

THE COUNTY OF GREY OFFICIAL PLAN

SECONDARY SCHEDULE

Land Use Designations

MAP 1e

BALMY BEACH

SCALE 1:10 000

INTERACTIVE MAP: maps.grey.ca

DOWNLOAD PDF: grey.ca

GR_OP_SecSched_Map1eBalmyBeachX11_June25 2012.mxd



THE COUNTY OF GREY OFFICIAL PLAN

SECONDARY SCHEDULE Land Use Designations

MAP 1f

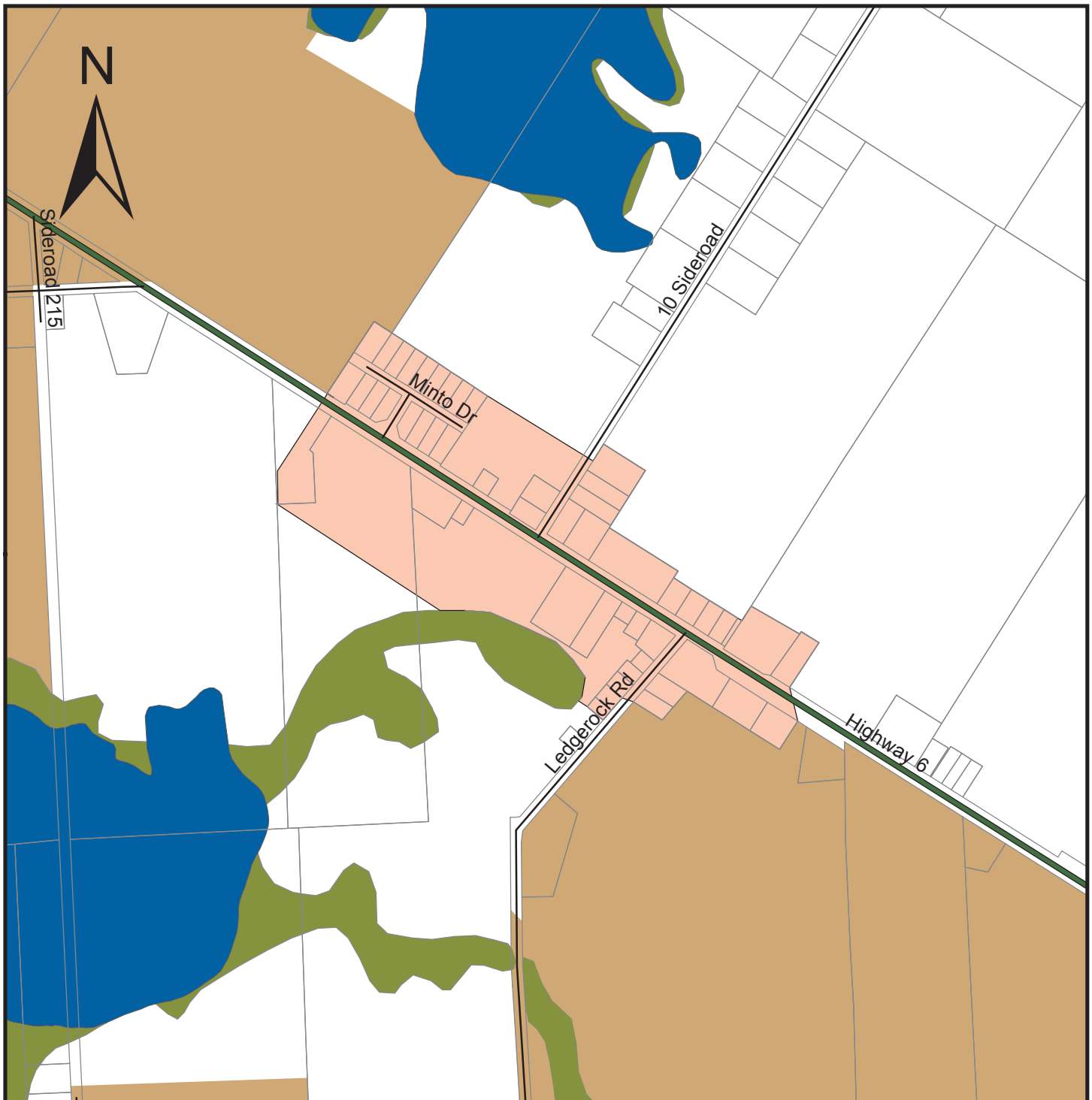
SHALLOW LAKE

SCALE 1:15 000

INTERACTIVE MAP: maps.grey.ca
 DOWNLOAD PDF: grey.ca

GR_OP_SecSched_Map1fShallowLakeX11_June25 2012.mxd

** certain settlement areas within the Niagara Escarpment Plan Boundary may be subject to Development Control.



LEGEND

- Provincial Highway
- County Road
- Local Road
- Seasonal Road
- Agricultural
- Special Agriculture
- Rural

- Primary Settlement Area
- Secondary Settlement Area
- Tertiary Settlement Area

- Inland Lakes & Shoreline
- Recreational Resort Area
- Space Extensive Commercial
- Space Extensive Industrial
- Hazard Lands
- Provincially Significant Wetlands

- Niagara Escarpment Plan Boundary **
- Niagara Escarpment Development Control Area
- Escarpment Recreation Area

** certain settlement areas within the Niagara Escarpment Plan Boundary may be subject to Development Control.

THE COUNTY OF GREY OFFICIAL PLAN

SECONDARY SCHEDULE Land Use Designations

MAP 1g

CRUICKSHANK

SCALE 1:10 000

INTERACTIVE MAP: maps.grey.ca
DOWNLOAD PDF: grey.ca

GR_OP_SecSched_Map1gCruickshankX11_June25 2012.mxd



LEGEND

— Provincial Highway

— County Road

— Local Road

- - - Seasonal Road

— Agricultural

— Special Agriculture

— Rural

— Primary Settlement Area

— Secondary Settlement Area

— Tertiary Settlement Area

— Inland Lakes & Shoreline

— Recreational Resort Area

— Space Extensive Commercial

— Space Extensive Industrial

— Hazard Lands

— Provincially Significant Wetlands

— Niagara Escarpment Plan Boundary **

— Niagara Escarpment Development Control Area

— Escarpment Recreation Area

** certain settlement areas within the Niagara Escarpment Plan Boundary may be subject to Development Control.

THE COUNTY OF GREY OFFICIAL PLAN

SECONDARY SCHEDULE

Land Use Designations

MAP 1i

SPRINGMOUNT

SCALE 1:15 000

INTERACTIVE MAP: maps.grey.ca

DOWNLOAD PDF: grey.ca

GR_OP_SecSched_Map1iSpringmountX11_June25 2012.mxd



LEGEND

— Provincial Highway

— County Road

— Local Road

- - - Seasonal Road

— Agricultural

— Special Agriculture

— Rural

— Primary Settlement Area

— Secondary Settlement Area

— Tertiary Settlement Area

— Inland Lakes & Shoreline

— Recreational Resort Area

— Space Extensive Commercial

— Space Extensive Industrial

— Hazard Lands

— Provincially Significant Wetlands

— Niagara Escarpment Plan Boundary **

— Niagara Escarpment Development Control Area

— Escarpment Recreation Area

** certain settlement areas within the Niagara Escarpment Plan Boundary may be subject to Development Control.

THE COUNTY OF GREY OFFICIAL PLAN

SECONDARY SCHEDULE

Land Use Designations

MAP 1j

KILSYTH

SCALE 1:10 000

INTERACTIVE MAP: maps.grey.ca

DOWNLOAD PDF: grey.ca

GR_OP_SecSched_Map1jKilsythX11_June25 2012.mxd



LEGEND

- Provincial Highway
- County Road
- Local Road
- Seasonal Road
- Agricultural
- Special Agriculture
- Rural
- Primary Settlement Area
- Secondary Settlement Area
- Tertiary Settlement Area

- Inland Lakes & Shoreline
- Recreational Resort Area
- Space Extensive Commercial
- Space Extensive Industrial
- Hazard Lands
- Provincially Significant Wetlands
- Niagara Escarpment Plan Boundary **
- Niagara Escarpment Development Control Area
- Escarpment Recreation Area

** certain settlement areas within the Niagara Escarpment Plan Boundary may be subject to Development Control.

THE COUNTY OF GREY OFFICIAL PLAN

SECONDARY SCHEDULE Land Use Designations

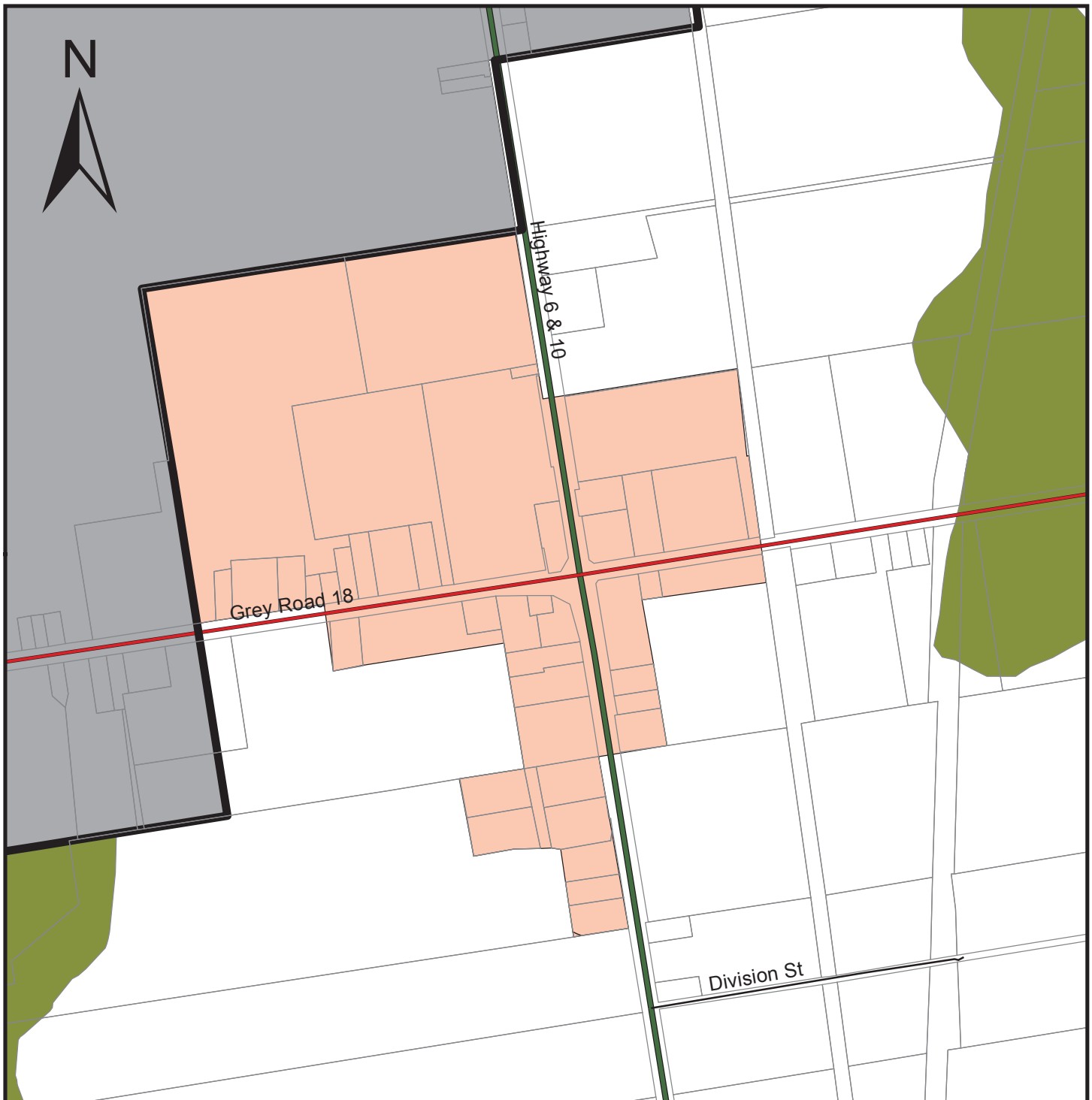
MAP 1k

KEADY

SCALE 1:10 000

INTERACTIVE MAP: maps.grey.ca
DOWNLOAD PDF: grey.ca

GR_OP_SecSched_Map1kKeadyX11_June25 2012.mxd



LEGEND

- Provincial Highway
- County Road
- Local Road
- Seasonal Road
- Agricultural
- Special Agriculture
- Rural

- Primary Settlement Area
- Secondary Settlement Area
- Tertiary Settlement Area

- Inland Lakes & Shoreline
- Recreational Resort Area
- Space Extensive Commercial
- Space Extensive Industrial

- Hazard Lands
- Provincially Significant Wetlands
- Niagara Escarpment Plan Boundary **
- Niagara Escarpment Development Control Area
- Escarpment Recreation Area

** certain settlement areas within the Niagara Escarpment Plan Boundary may be subject to Development Control.

THE COUNTY OF GREY OFFICIAL PLAN

SECONDARY SCHEDULE Land Use Designations

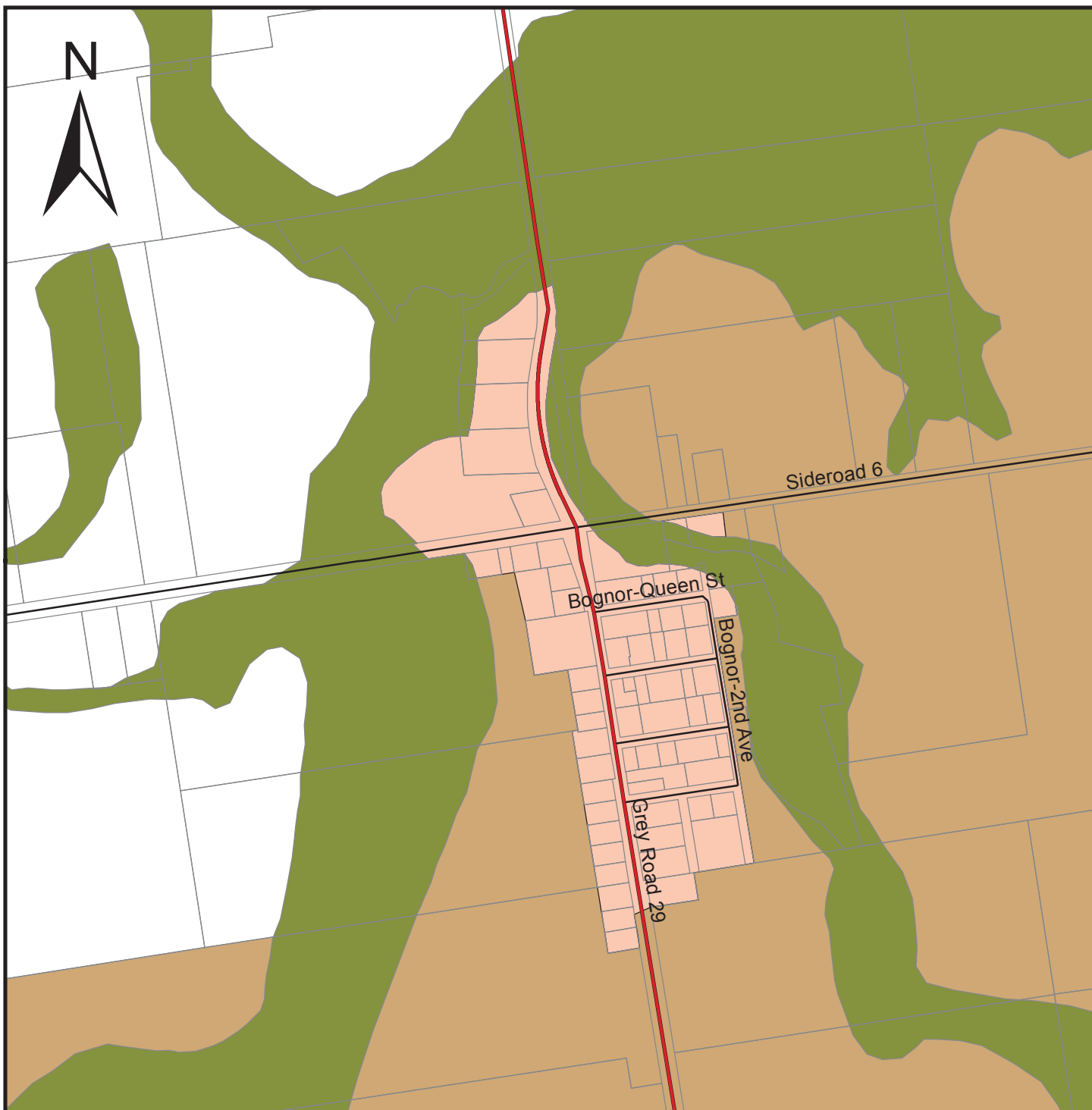
MAP 1L

ROCKFORD

SCALE 1:10 000

INTERACTIVE MAP: maps.grey.ca
 DOWNLOAD PDF: grey.ca

GR_OP_SecSched_Map1aOxendenX11_June25 2012.mxd



LEGEND

— Provincial Highway

— County Road

— Local Road

- - - Seasonal Road

— Agricultural

— Special Agriculture

— Rural

— Primary Settlement Area

— Secondary Settlement Area

— Tertiary Settlement Area

— Inland Lakes & Shoreline

— Recreational Resort Area

— Space Extensive Commercial

— Space Extensive Industrial

— Hazard Lands

— Provincially Significant Wetlands

— Niagara Escarpment Plan Boundary **

— Niagara Escarpment Development Control Area

— Escarpment Recreation Area

** certain settlement areas within the Niagara Escarpment Plan Boundary may be subject to Development Control.

THE COUNTY OF GREY OFFICIAL PLAN

SECONDARY SCHEDULE

Land Use Designations

MAP 1m

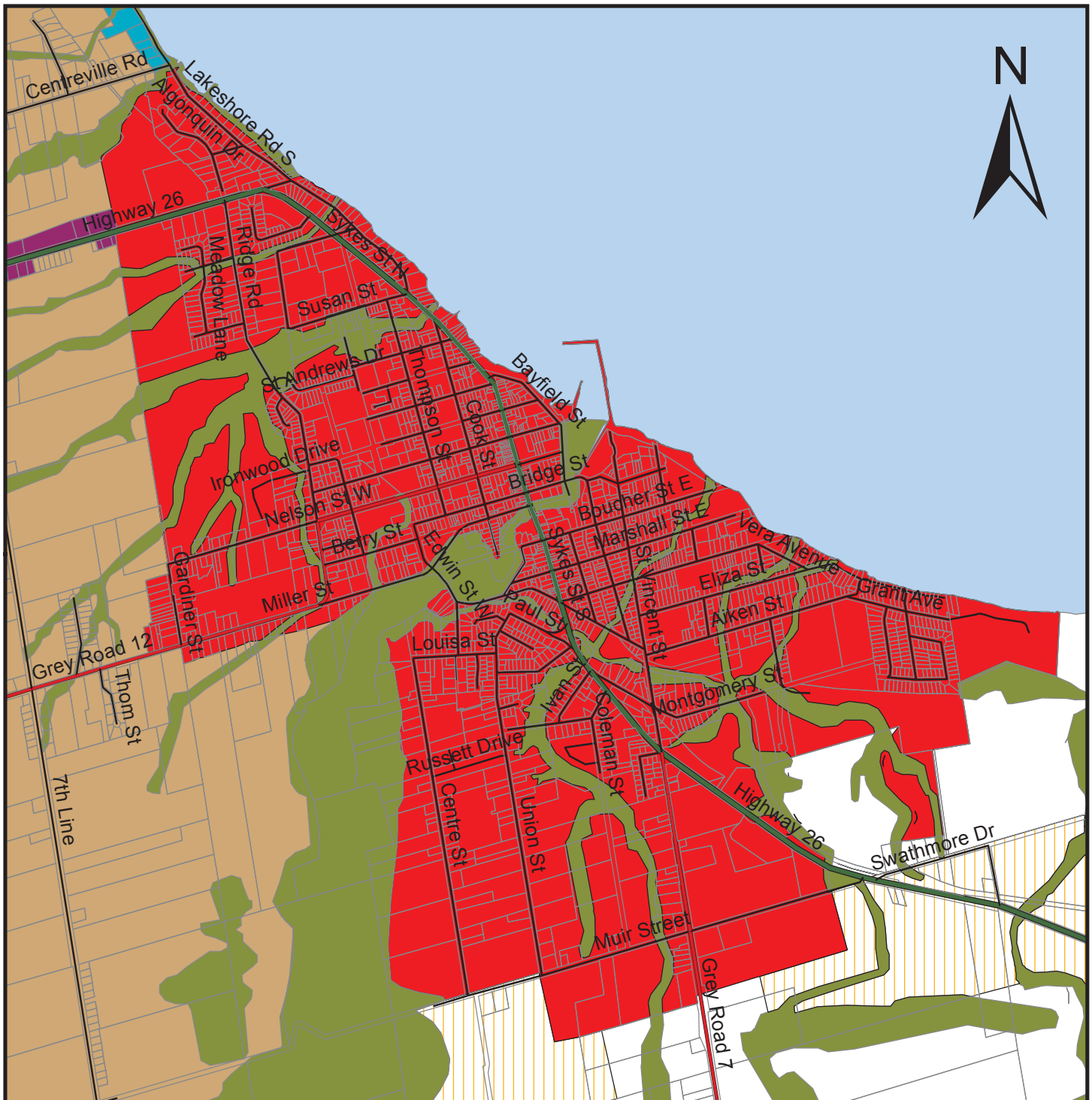
BOGNOR

SCALE 1:10 000

INTERACTIVE MAP: gis.greycounty.ca

DOWNLOAD PDF: grey.ca

GR_OP_SecSched_Map1mBognorX11_June25 2012.mxd



LEGEND

— Provincial Highway

— County Road

— Local Road

- - - Seasonal Road

— Agricultural

— Special Agriculture

— Rural

— Primary Settlement Area

— Secondary Settlement Area

— Tertiary Settlement Area

— Inland Lakes & Shoreline

— Recreational Resort Area

— Space Extensive Commercial

— Space Extensive Industrial

— Hazard Lands

— Provincially Significant Wetlands

— Niagara Escarpment Plan Boundary **

— Niagara Escarpment Development Control Area

— Escarpment Recreation Area

** certain settlement areas within the Niagara Escarpment Plan Boundary may be subject to Development Control.

THE COUNTY OF GREY OFFICIAL PLAN

SECONDARY SCHEDULE

Land Use Designations

MAP 1n

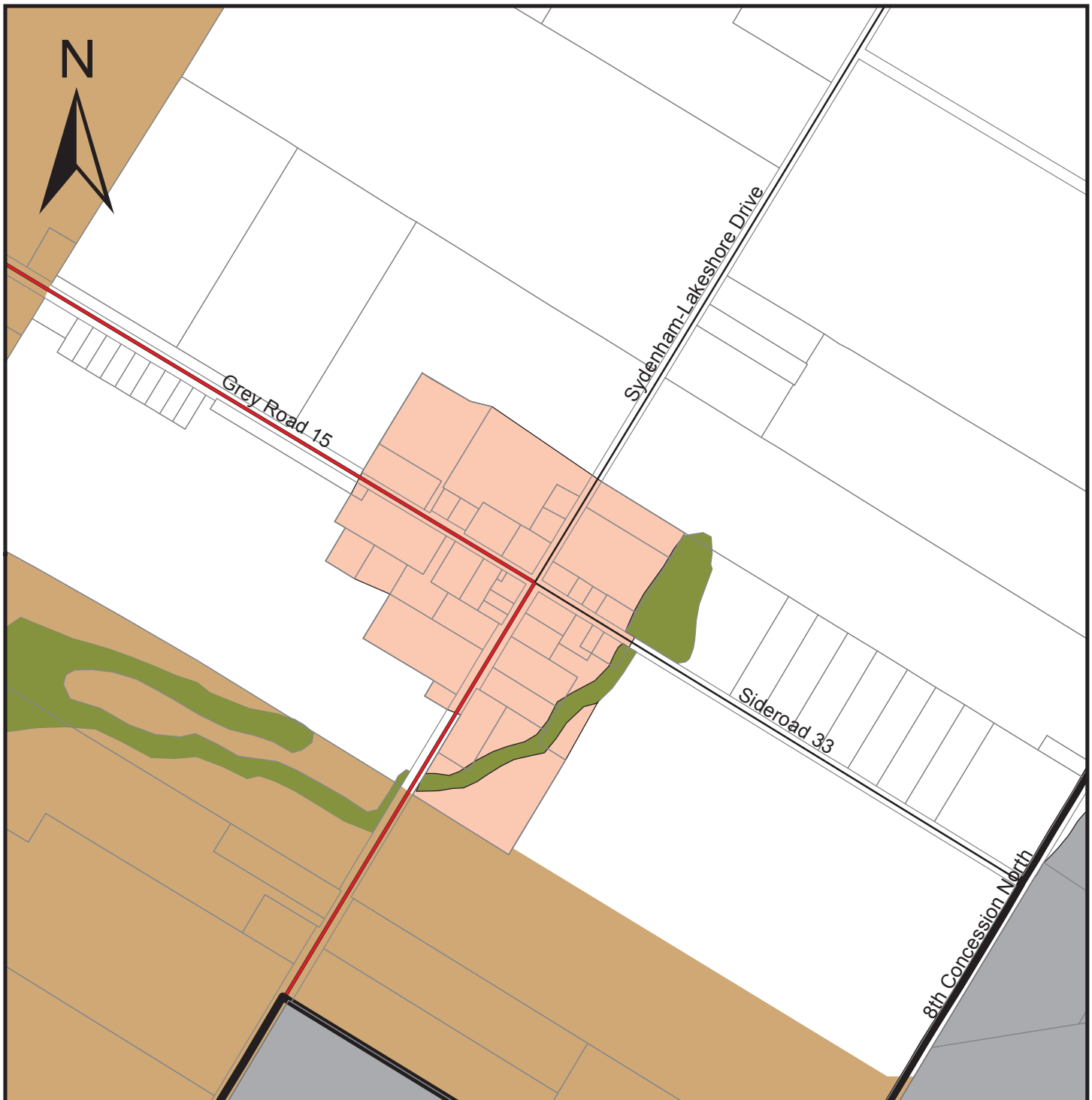
MEAFORD

SCALE 1:25 000

INTERACTIVE MAP: maps.grey.ca

DOWNLOAD PDF: grey.ca

GR_OP_SecSched_Map1nMeafordX11_June25 2012.mxd



LEGEND

— Provincial Highway

— County Road

— Local Road

- - - Seasonal Road

— Agricultural

— Special Agriculture

— Rural

— Primary Settlement Area

— Secondary Settlement Area

— Tertiary Settlement Area

— Inland Lakes & Shoreline

— Recreational Resort Area

— Space Extensive Commercial

— Space Extensive Industrial

— Hazard Lands

— Provincially Significant Wetlands

— Niagara Escarpment Plan Boundary **

— Niagara Escarpment Development Control Area

— Escarpment Recreation Area

** certain settlement areas within the Niagara Escarpment Plan Boundary may be subject to Development Control.

THE COUNTY OF GREY OFFICIAL PLAN

SECONDARY SCHEDULE

Land Use Designations

MAP 1o

ANNAN

SCALE 1:10 000

INTERACTIVE MAP: maps.grey.ca

DOWNLOAD PDF: grey.ca

GR_OP_SecSched_Map1oAnnanX11_June25 2012.mxd



LEGEND

— Provincial Highway

— County Road

— Local Road

- - - Seasonal Road

— Agricultural

— Special Agriculture

— Rural

— Primary Settlement Area

— Secondary Settlement Area

— Tertiary Settlement Area

— Inland Lakes & Shoreline

— Recreational Resort Area

— Space Extensive Commercial

— Space Extensive Industrial

— Hazard Lands

— Provincially Significant Wetlands

— Niagara Escarpment Plan Boundary **

— Niagara Escarpment Development Control Area

— Escarpment Recreation Area

** certain settlement areas within the Niagara Escarpment Plan Boundary may be subject to Development Control.

THE COUNTY OF GREY OFFICIAL PLAN

SECONDARY SCHEDULE

Land Use Designations

MAP 1p

LEITH

SCALE 1:10 000

INTERACTIVE MAP: maps.grey.ca

DOWNLOAD PDF: grey.ca

GR_OP_SecSched_Map1pLeithX11_June25 2012.mxd



LEGEND

- | | | | |
|--|---|--|-----------------------------------|
| | Provincial Highway | | Inland Lakes & Shoreline |
| | County Road | | Recreational Resort Area |
| | Local Road | | Space Extensive Commercial |
| | Seasonal Road | | Space Extensive Industrial |
| | Agricultural | | Hazard Lands |
| | Special Agriculture | | Provincially Significant Wetlands |
| | Rural | | Residential |
| | Primary Settlement Area | | Open Space |
| | Secondary Settlement Area | | Village Centre |
| | Tertiary Settlement Area | | Environmental Protection |
| | Niagara Escarpment Plan Boundary ** | | Cultural Heritage Area |
| | Niagara Escarpment Development Control Area | | |
| | Escarpment Recreation Area | | |

** certain settlement areas within the Niagara Escarpment Plan Boundary may be subject to Development Control.

THE COUNTY OF GREY OFFICIAL PLAN

SECONDARY SCHEDULE Land Use Designations

MAP 1q

COBBLE BEACH Georgian Villas Inc.

SCALE 1:15 000

INTERACTIVE MAP: maps.grey.ca
DOWNLOAD PDF: grey.ca

GR_OP_SecSched_Map1qCobbleBeachX11_June25 2012.mxd

This map is for illustrative purposes only. Do not rely on this map as being a precise indicator of routes, location of features or surveying purposes. This map may contain cartographical errors or omissions.



LEGEND

— Provincial Highway

— County Road

— Local Road

- - - Seasonal Road

■ Agricultural

■ Special Agriculture

■ Rural

■ Primary Settlement Area

■ Secondary Settlement Area

■ Tertiary Settlement Area

■ Inland Lakes & Shoreline

■ Recreational Resort Area

■ Space Extensive Commercial

■ Space Extensive Industrial

■ Hazard Lands

■ Provincially Significant Wetlands

— Niagara Escarpment Plan Boundary **

■ Niagara Escarpment Development Control Area

■ Escarpment Recreation Area

** certain settlement areas within the Niagara Escarpment Plan Boundary may be subject to Development Control.

THE COUNTY OF GREY OFFICIAL PLAN

SECONDARY SCHEDULE

Land Use Designations

MAP 1r

WOODFORD

SCALE 1:10 000

INTERACTIVE MAP: maps.grey.ca

DOWNLOAD PDF: grey.ca

GR_OP_SecSched_Map1rWoodfordX11_June25 2012.mxd