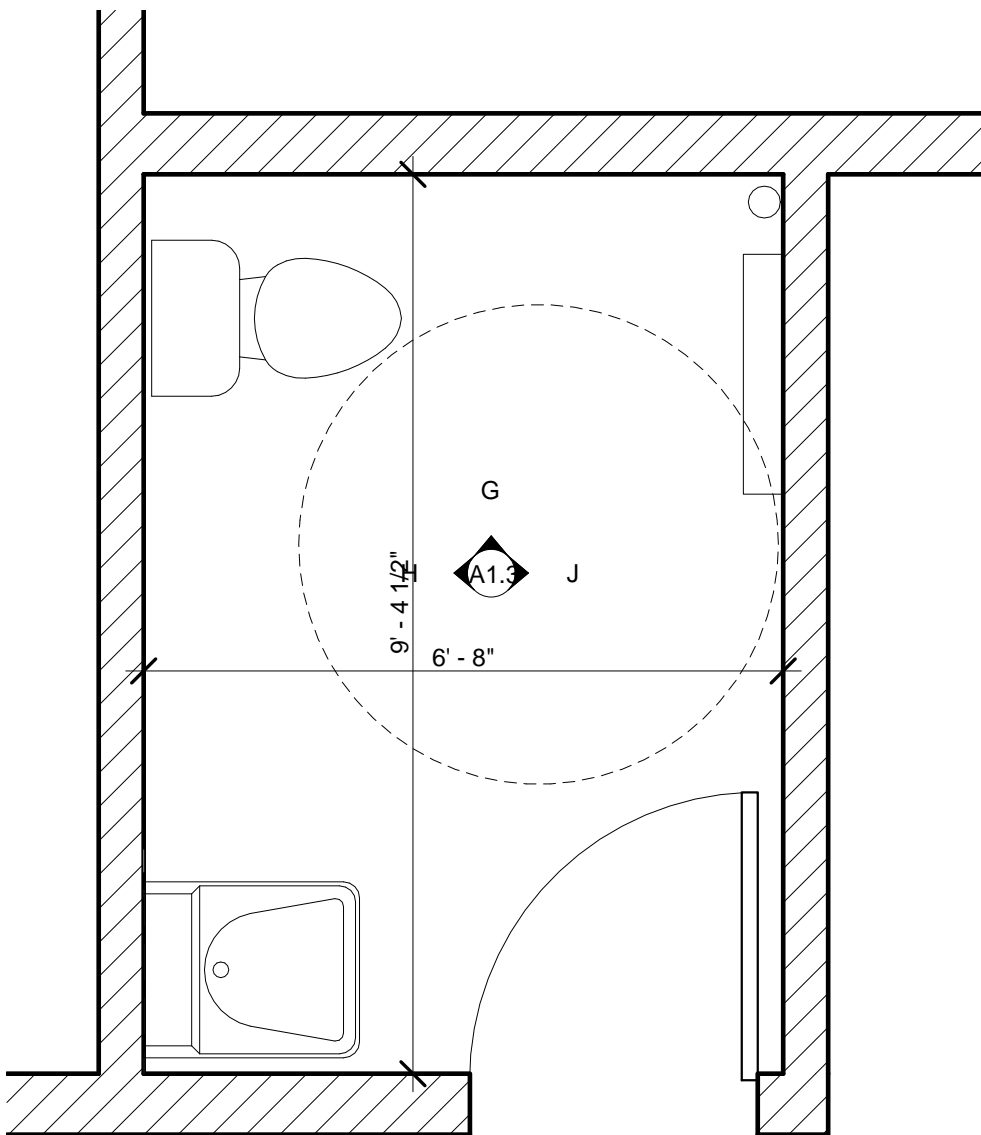


A Typical Bathroom Plan
A1.3 3/4" = 1'-0"

MATERIAL LIST

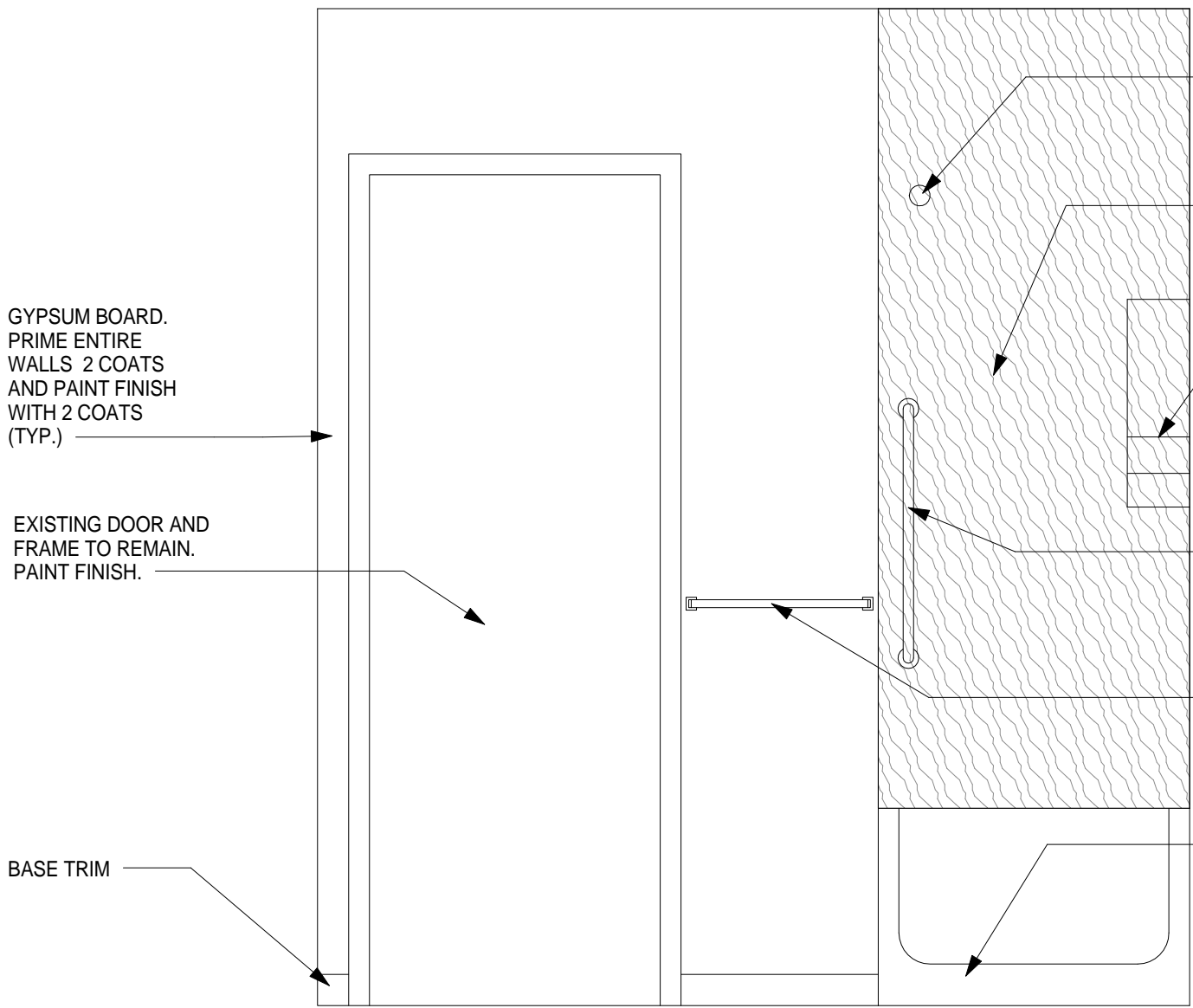
CONSTRUCTION	MECHANICAL	PRODUCT #	ELECTRICAL	PRODUCT #	PLUMBING	PRODUCT #	ACCESSORIES	PRODUCT #
	EXHAUST FAN	BROAN XB110C SINGLE SPEED	2 - SWITCHES 1 - GFCI		TOILET	AMERICAN STANDARD CADET 3		
AQUA TOUGH BOARD OR CEMENT BOARD			VANITY LIGHT WITH T8 BULB	PHILIPS CUBELITE CSW124-UNVHI	TUB	MIROLIN PHOENIX PA6030	MEDICINE CABINET	
CULTURED MARBLE STONE					VANITY	24" WIDE EXPRESSO FINISH	2- 24" GRABS BARS 1 - 36" GRAB BAR	MOEN R8924 MOEN R8936
PRIMER/PAINT					SHOWER CONTROLS	MOEN CALDWELL CHROME PRESSURE BALANCE 82496C	TOWEL BAR	MOEN 2218
VINYL PLANK FLOORING					VANITY FAUCET	MOEN ADLER SINGLE LEVER CAL84502	TOILET PAPER HOLDER	MOEN 2050CH
BASE TRIM					SHUT OFF VALVES		SHOWER CURTAIN	ZENITH 641S

- NOTES:**
- MATERIAL BREAKDOWN IS ONLY A GUIDE FOR MATERIAL REQUIRED. CONTRACTOR RESPONSIBLE FOR QUANTITY TAKEOFF OF ALL MATERIAL REQUIRED TO COMPLETE WORK.
 - APPROVED ALTERNATES MUST BE RECEIVED BY OWNER PRIOR TO TENDER CLOSING. SPEC SHEET MUST BE SUBMITTED TO OWNER FOR APPROVAL.
 - SQUARE FOOTAGES ARE APPROX. BATH LAYOUTS VERY FROM LOCATION TO LOCATION. CONTRACTOR TO CONFIRM ALL DIMENSIONS AND QUANTITIES PRIOR TO WORK COMMENCING.
 - BARRIER FREE WASHROOM MATERIALS LABELLED ON ELEVATIONS.

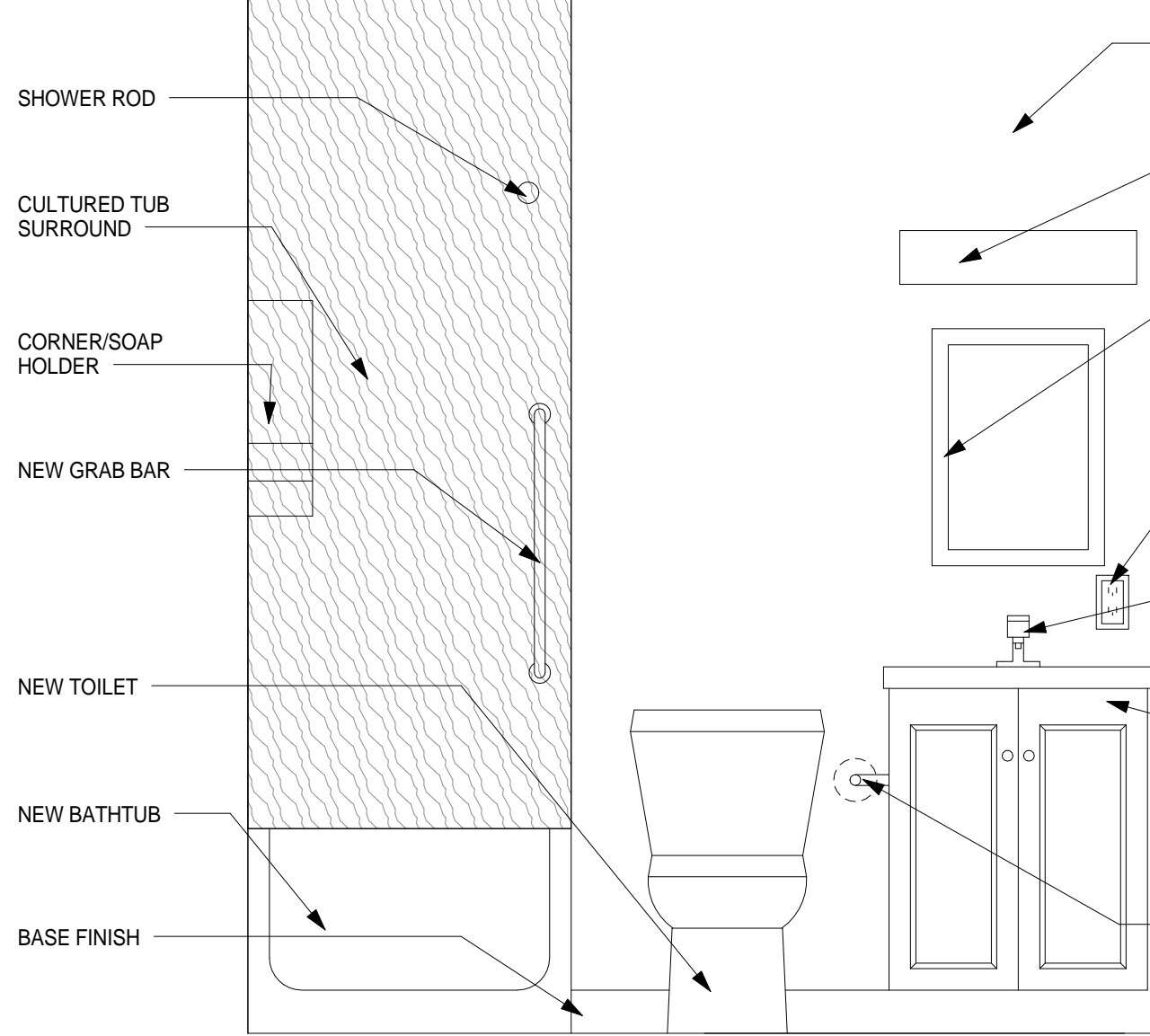


F Barrier Free Washroom
A1.3 1/2" = 1'-0"

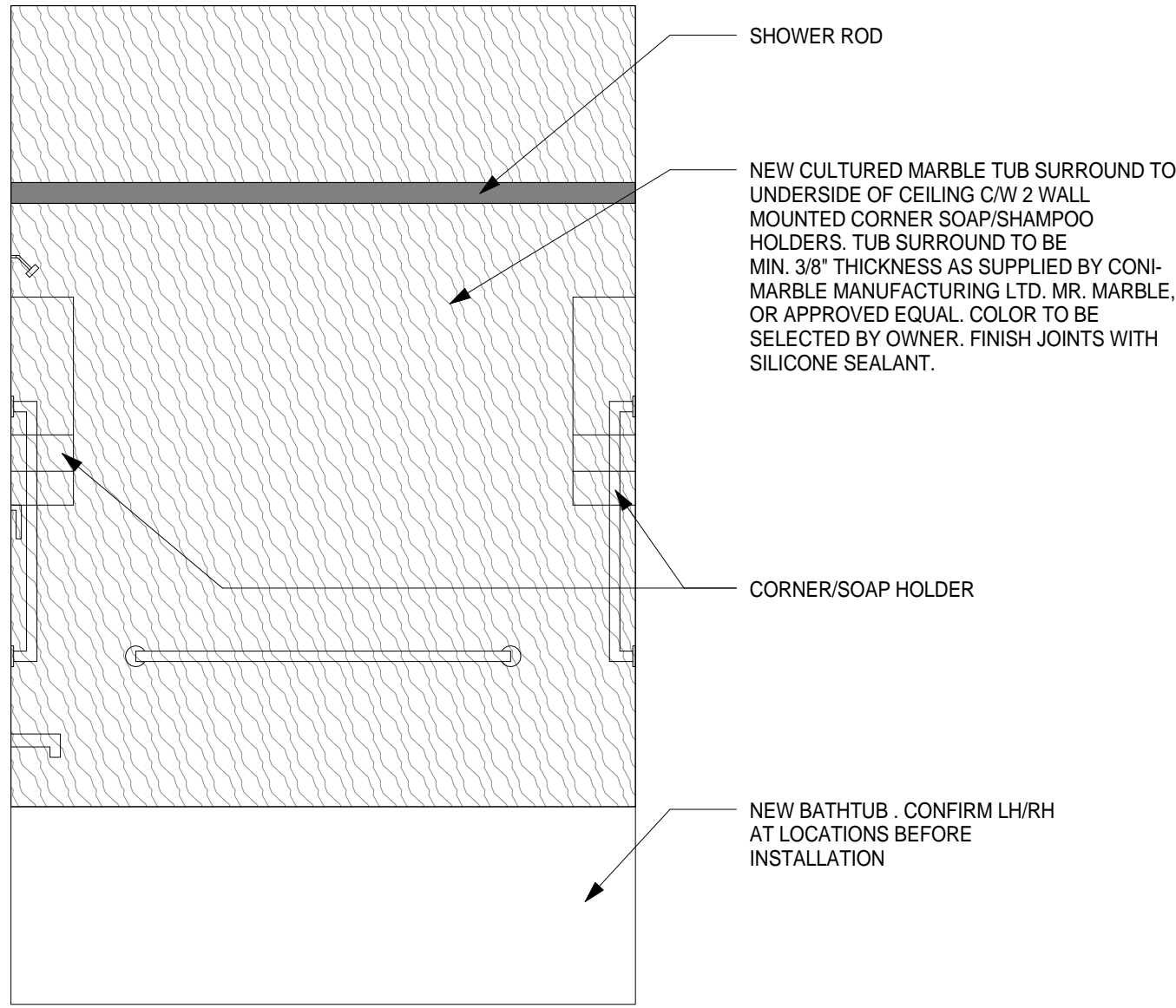
G Interior Elevation
A1.3 1/2" = 1'-0"



B Interior Elevation
A1.3 3/4" = 1'-0"



C Interior Elevation
A1.3 3/4" = 1'-0"



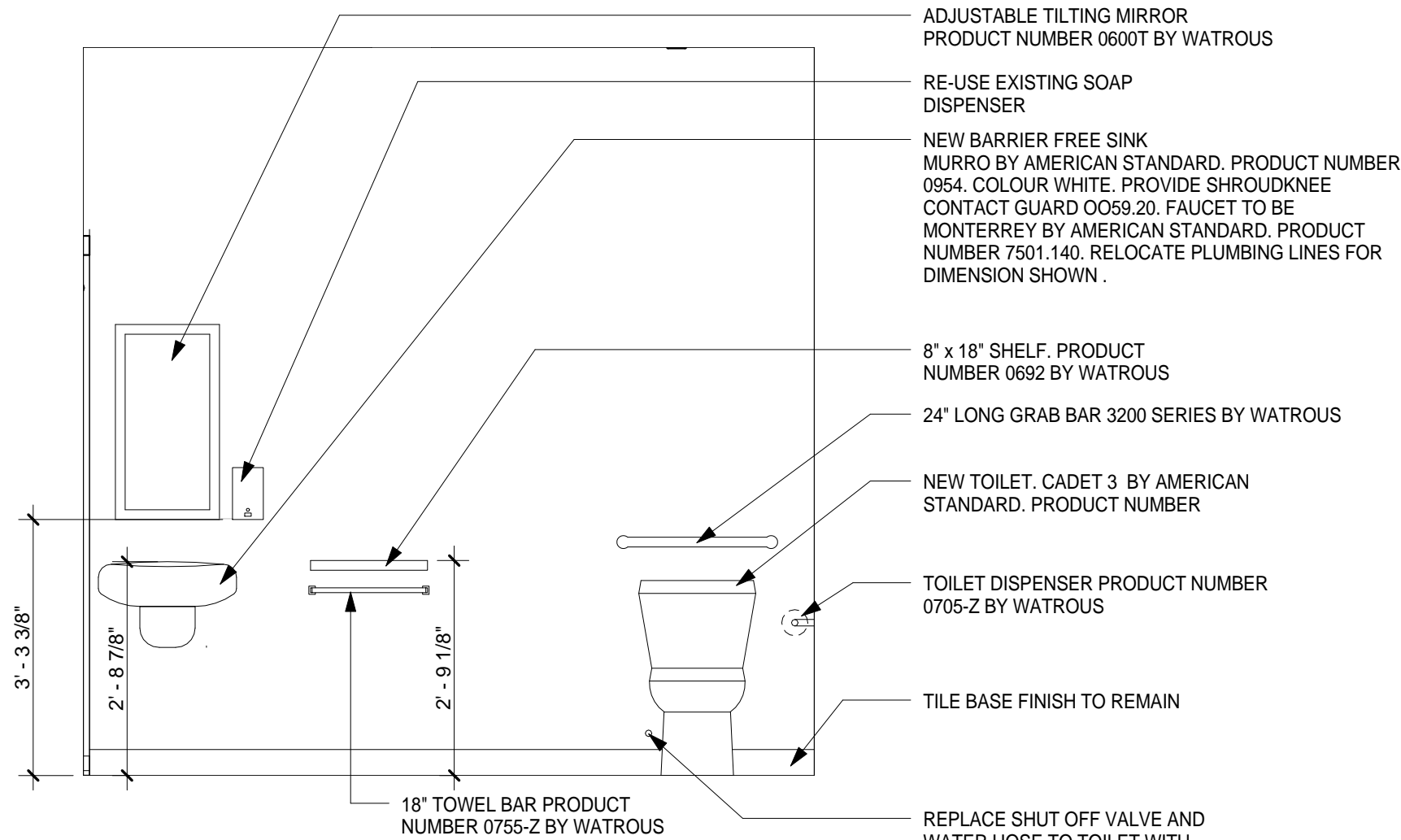
D Interior Elevation
A1.3 3/4" = 1'-0"

DEMOLITION NOTES

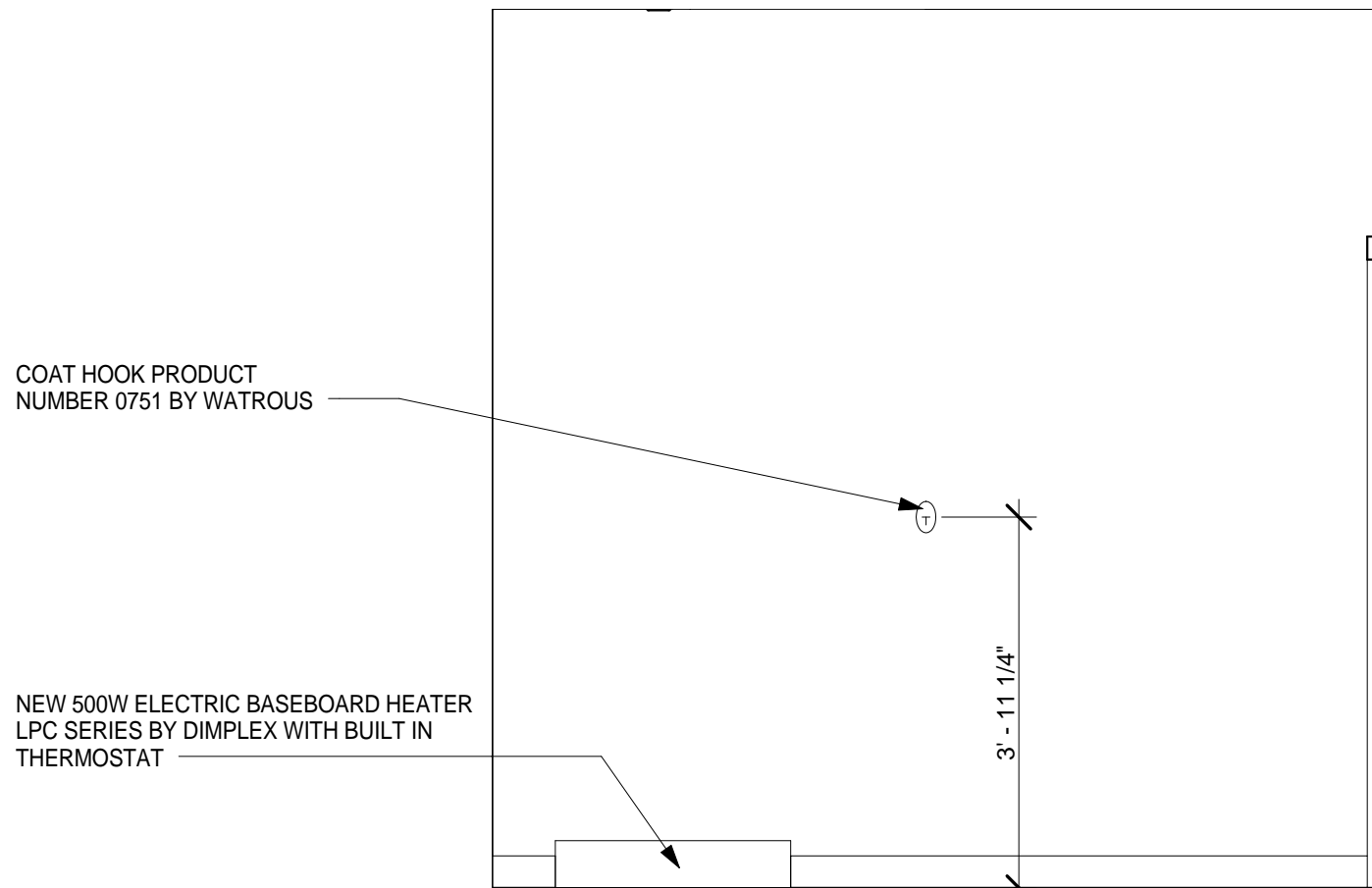
- REMOVE ALL EXISTING PLUMBING FIXTURES, VANITIES, COUNTERTOPS & WASHROOM ACCESSORIES. RELOCATE NEW PLUMBING LINES AS REQUIRED FOR INSTALLATION OF NEW PLUMBING FIXTURES.
- REMOVE ALL EXISTING GYPSUM BOARD ON WALLS AND CEILINGS. SUPPLY & INSTALL AQUA TOUGH BOARD OR CEMENT BOARD WHERE NEW CULTURED MARBLE SURROUNDS IS SHOWN ON DRAWINGS. ALL OTHER GYPSUM BOARD TO BE MOISTURE RESISTANT.
- REMOVE ALL EXISTING FLOORING AND TRIMS.
- SUPPLY & INSTALL SOLID WOOD BLOCKING AT ALL WASHROOM ACCESSORY LOCATIONS.
- ALL WASHROOM ACCESSORIES TO BE INSTALLED AT SAME HEIGHT/LOCATIONS AS SHOWN ON DRAWINGS.
- MAKE GOOD AND DAMAGED SURFACES DUE TO CONSTRUCTION.
- VERIFY ALL DIMENSIONS BEFORE CONSTRUCTION.
- ALL GYPSUM BOARD TO RECIEVE 2 COATS OF PRIMER AND 2 COATS OF PAINT.
- EXISTING DOOR AND FRAME TO REMAIN.
- ELECTRICAL SWITCHES, PLUGS AND EXHAUST FAN TO BE REMOVED. SUPPLY AND INSTALL NEW.

CONSTRUCTION NOTES

- CONTRACTOR TO VERIFY ALL DIMENSIONS PRIOR TO COMMENCING OF WORK.
- CONTRACTOR TO SEND OWNER DETAILED CONSTRUCTION SCHEDULE .
- CONTRACTOR TO REVIEW ALL SITE CONDITIONS.
- ALL PRODUCTS SPECIFIED ON DRAWINGS. APPROVED EQUAL MUST BE RECEIVED AND REVIEWED/APPROVED BY OWNER PRIOR TO CLOSING OF TENDER.
- ALL WORK COMPLETED MUST MEET OR EXCEED THE ONTARIO BUILDING CODE.
- ALL EXISTING FIRE PROTECTION DEVICES SHALL BE PROTECTED DURING CONSTRUCTION PROCESS.
- BATHROOM LOCATIONS LAYOUT VERY FROM LOCATION TO LOCATION
- ALL MARBLE SURROUND TO BE FULL HEIGHT TO CEILING. CONTRACTOR TO VERIFY CEILING HEIGHTS.
- NEW SHUT OFF VALVES TO BE INSTALLED AT ALL VANITY LOCATIONS.
- SUPPLY AND INSTALL INSULATED EXHAUST PIPE FROM EXHAUST FAN IF FAN IS INSTALLED IN ATTIC CEILING.
- PROVIDE NEW BALL TYPE VALVE SHUTOFFS AT SINK LOCATIONS.
- PROVIDE ALL NEW WATER LINES, PIPES FOR DRAINS AND TRAPS FOR INSTALLATION OF NEW VANITIES.



H Interior Elevation
A1.3 1/2" = 1'-0"



J Interior Elevation
A1.3 1/2" = 1'-0"



PROJECT INFORMATION:

Bath Rebuilds
250 12th Ave.
Hanover, Ontario

JOB DESCRIPTION:

BATH REBUILDS

TITLE:
PLANS & DETAILS

DATE:
2016.02.16

SHEET #

SCALE:
AS NOTED

A1.3